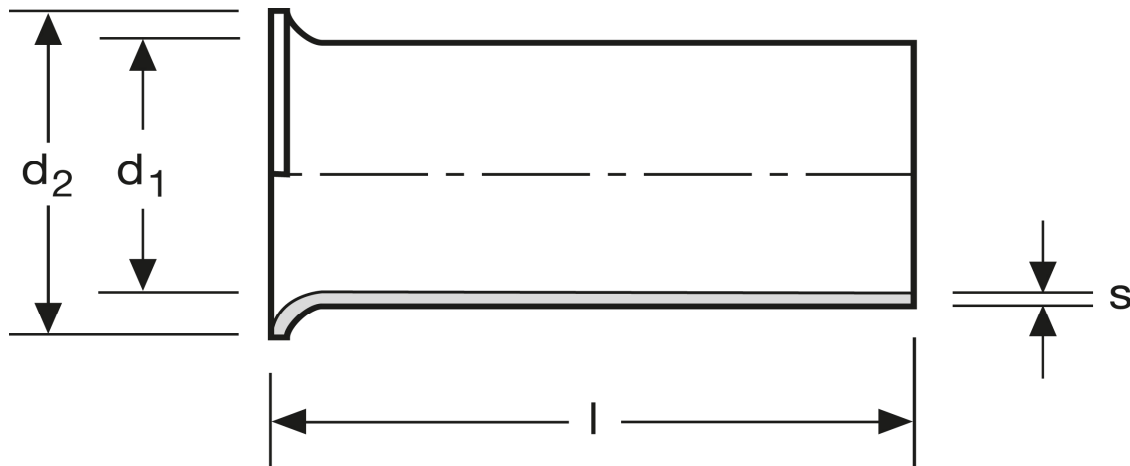


Aderendhülsen

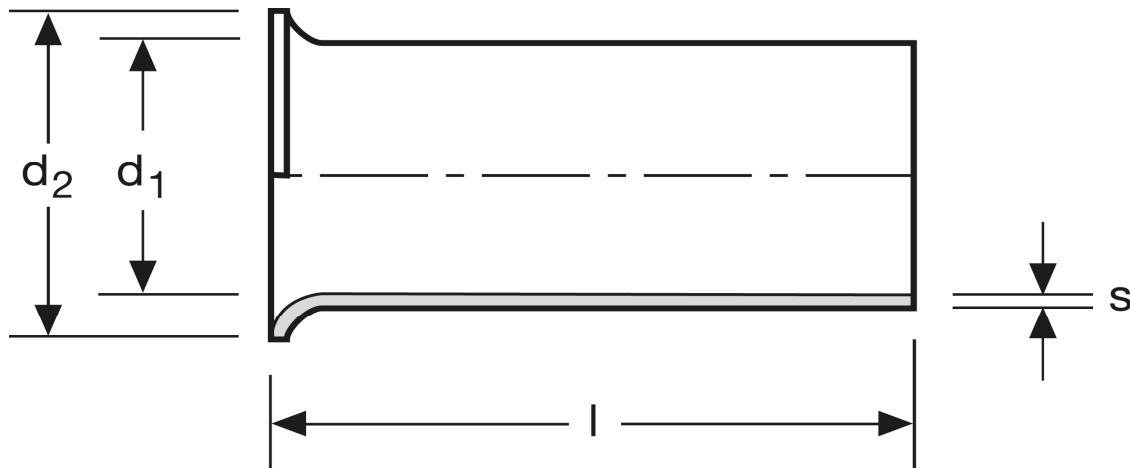
0,25 mm² - 10 mm



Art.Nr.	Werkstoff	Oberfläche		
A 103100	Cu-ETP	galv. Sn	0,060/1000	1.000
	l	d ₁	d ₂	s
in mm:	10	0,8	1,7	0,15

Stand: 26.06.2014

Cord end-sleeves
 0,25 mm² - 10 mm



art.no.	material	surface		
A 103100	Cu-ETP	tin plated	0,060/1000	1.000
	l	d₁	d₂	s
in mm:	10	0,8	1,7	0,15

Date: 26.06.2014