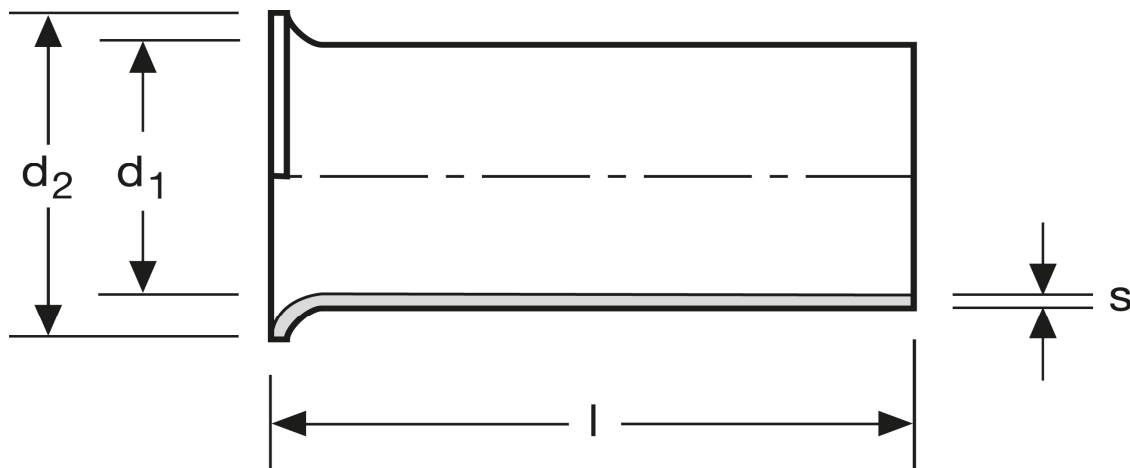


Aderendhülsen

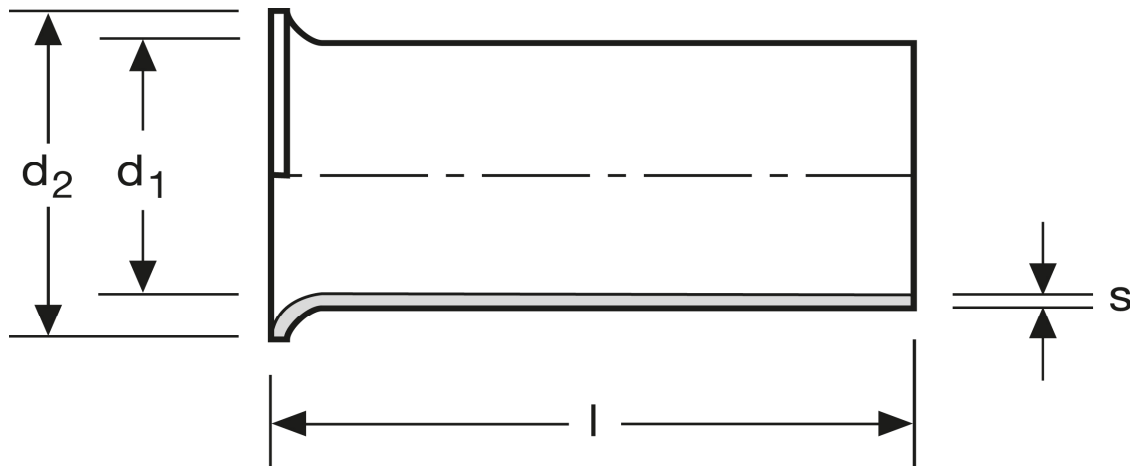
0,34 mm² - 5 mm



Art.Nr.	Werkstoff	Oberfläche		
A 104051	Cu-ETP	galv. Ag	0,026/1000	1.000
	l	d ₁	d ₂	s
in mm:	5	0,9	1,8	0,15

Stand: 26.06.2014

Cord end-sleeves
 0,34 mm² - 5 mm



art.no.	material	surface		
A 104051	Cu-ETP	silv. plated	0,026/1000	1.000
	l	d_1	d_2	s
in mm:	5	0,9	1,8	0,15

Date: 26.06.2014