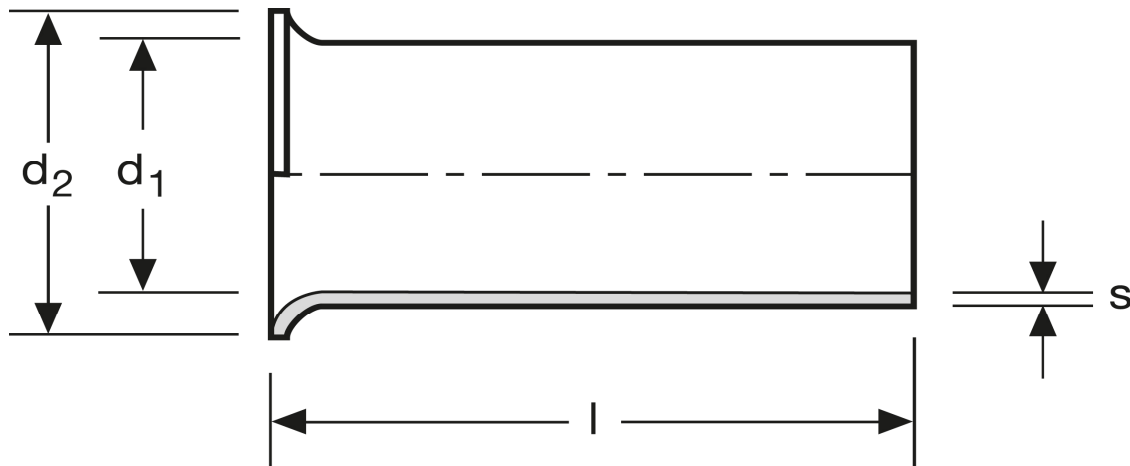


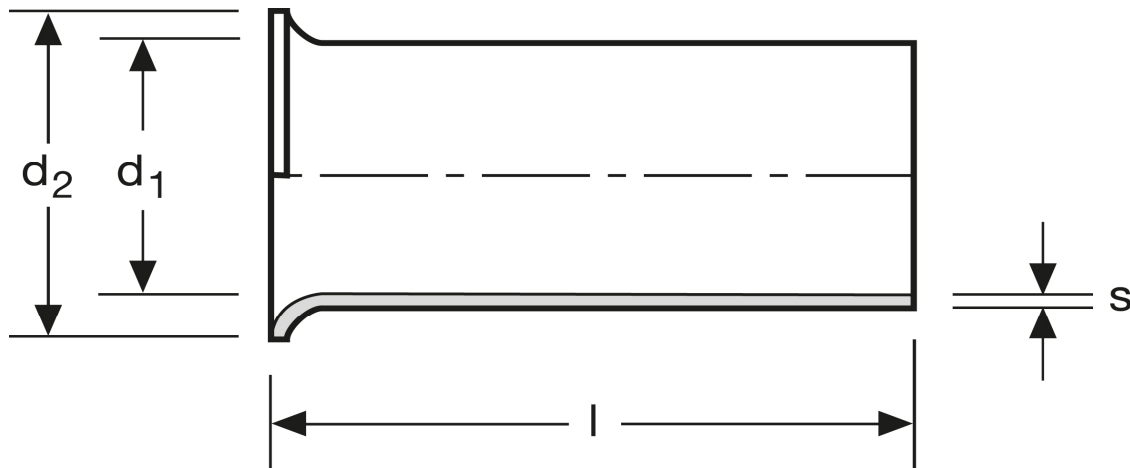
Aderendhülsen 0,5 mm² - 12 mm



Art.Nr.	Werkstoff	Oberfläche		
A 105120	Cu-ETP	galv. Sn	0,066/1000	1.000
	l	d ₁	d ₂	s
in mm:	12	1,1	2,1	0,15

Stand: 26.06.2014

Cord end-sleeves 0,5 mm² - 12 mm



art.no.	material	surface		
A 105120	Cu-ETP	tin plated	0,066/1000	1.000
	l	d_1	d_2	s
in mm:	12	1,1	2,1	0,15

Date: 26.06.2014