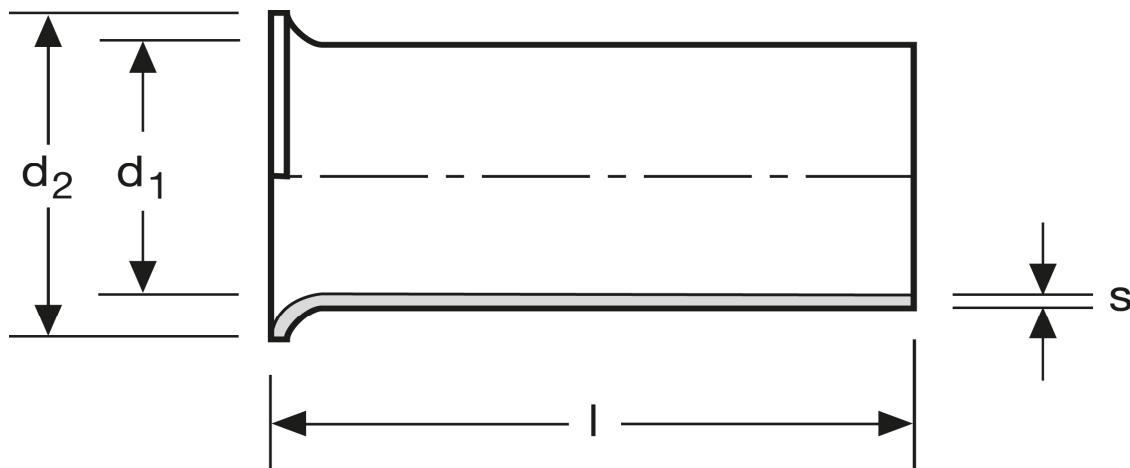


## Aderendhülsen

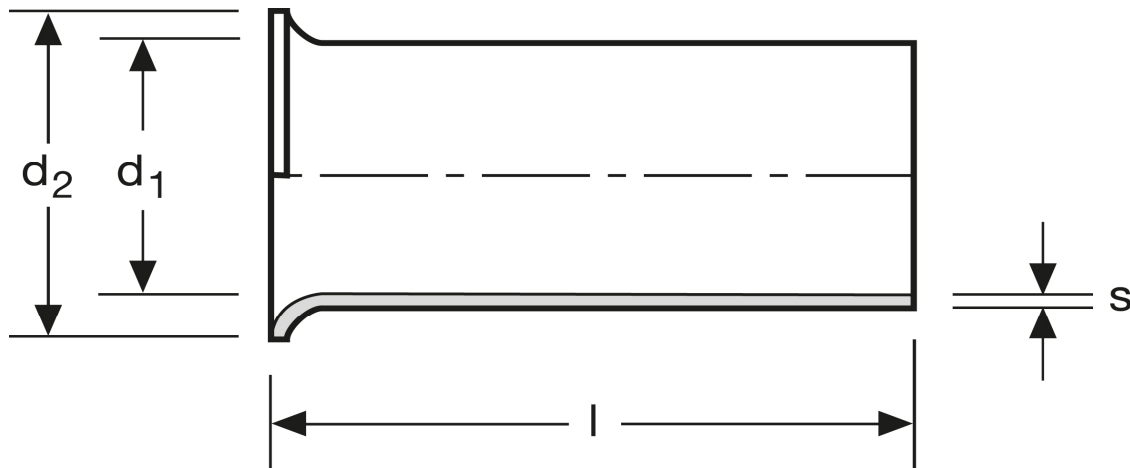
0,5 mm<sup>2</sup> - 12 mm



Art.Nr.	Werkstoff	Oberfläche		
A 105121	Cu-ETP	galv. Ag	0,066/1000	1.000
	l	d <sub>1</sub>	d <sub>2</sub>	s
in mm:	12	1,1	2,1	0,15

Stand: 26.06.2014

## Cord end-sleeves 0,5 mm<sup>2</sup> - 12 mm



art.no.	material	surface		
A 105121	Cu-ETP	silv. plated	0,066/1000	1.000
	$l$	$d_1$	$d_2$	$s$
in mm:	12	1,1	2,1	0,15

Date: 26.06.2014