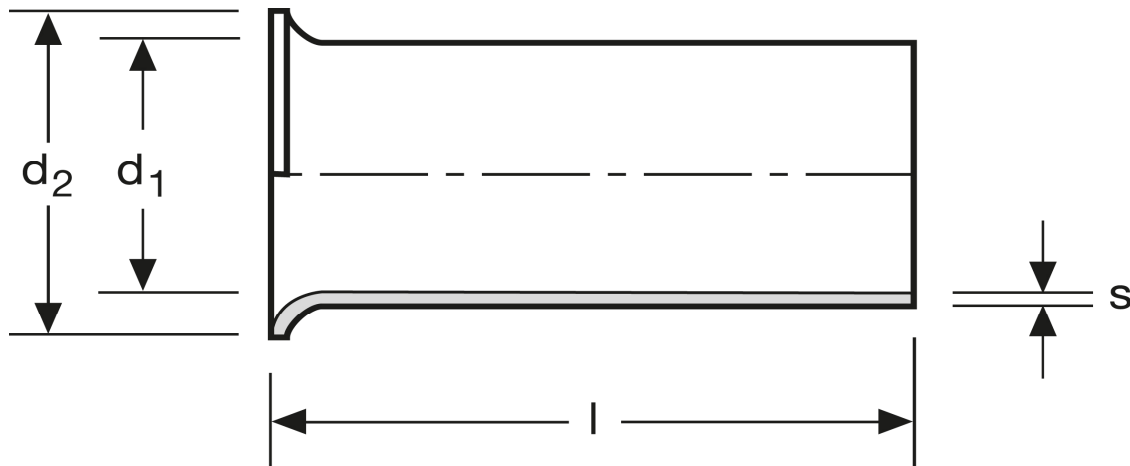


Aderendhülsen

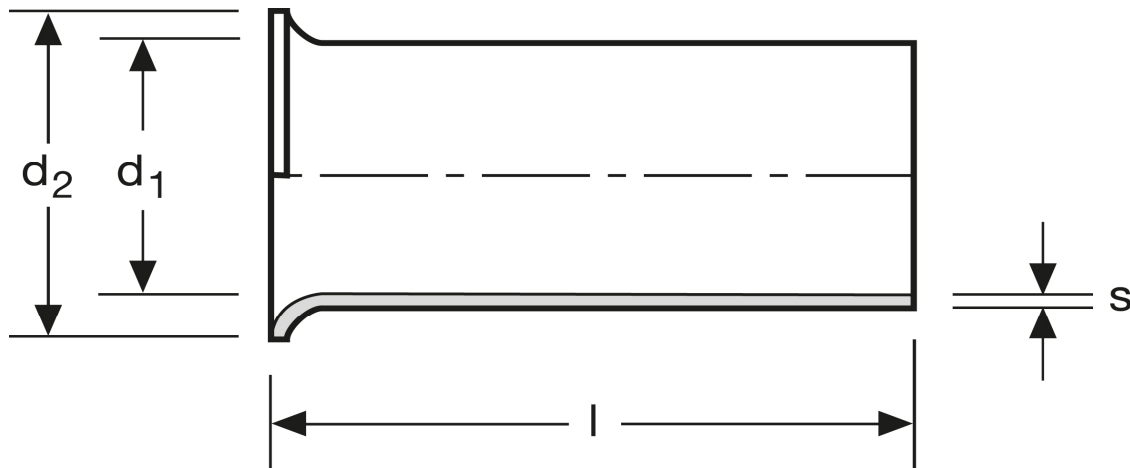
1 mm² - 10 mm



Art.Nr.	Werkstoff	Oberfläche		
A 107101	Cu-ETP	galv. Ag	0,074/1000	1.000
	l	d ₁	d ₂	s
in mm:	10	1,5	2,5	0,15

Stand: 26.06.2014

Cord end-sleeves 1 mm² - 10 mm



art.no.	material	surface		
A 107101	Cu-ETP	silv. plated	0,074/1000	1.000
	l	d₁	d₂	s
in mm:	10	1,5	2,5	0,15

Date: 26.06.2014