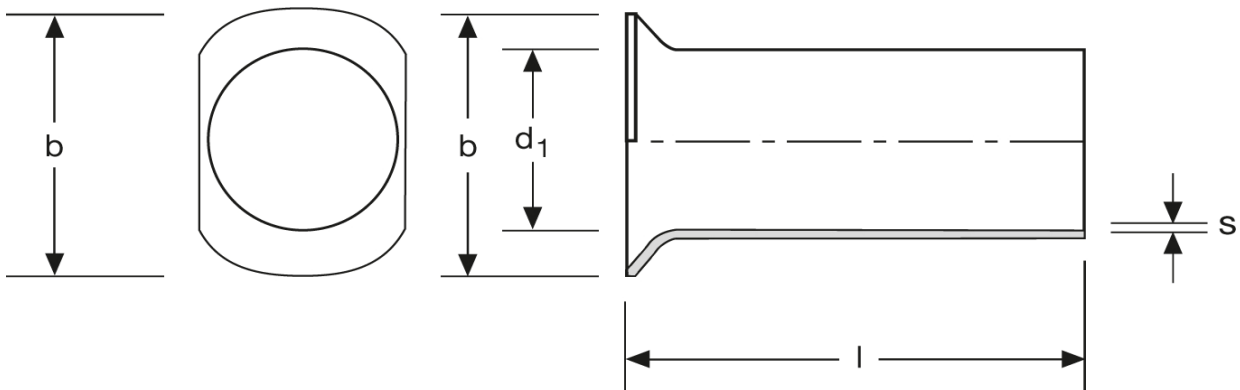
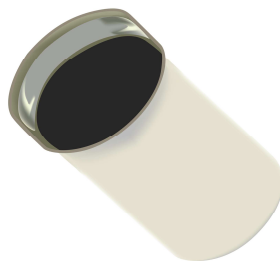


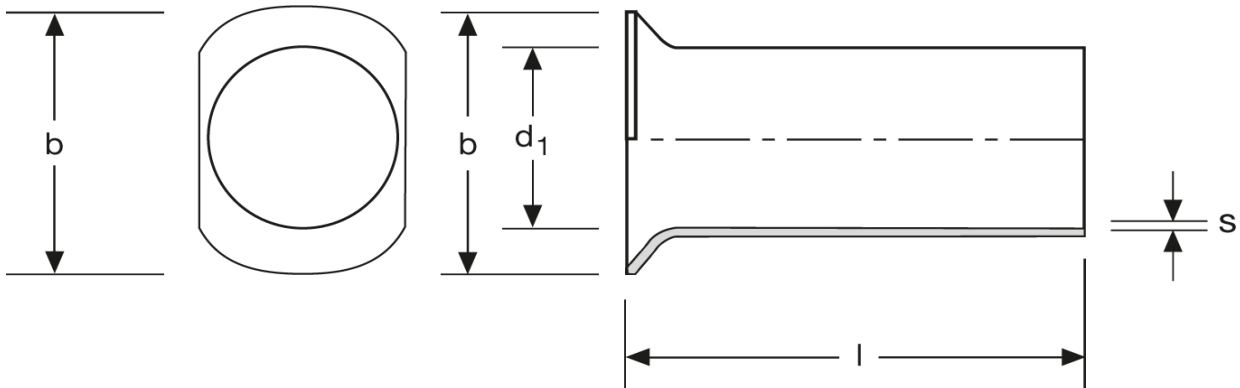
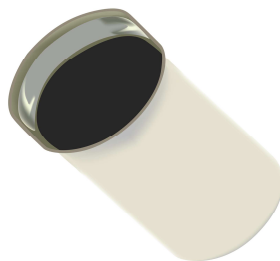
**Twin - Aderendhülsen**  
 Typ B - ovaler Kragen  
 0,75 mm<sup>2</sup> - 8 mm



Art.Nr.	Werkstoff	Oberfläche		
A 1660800	Cu-ETP	galv. Sn	0,073/1000	1.000
	<b>l</b>	<b>d<sub>1</sub></b>	<b>b</b>	<b>s</b>
<b>in mm:</b>	<b>8,6</b>	<b>1,8</b>	<b>2,8</b>	<b>0,15</b>

Stand: 04.07.2014

**Twin cord end-sleeves**  
 type B - oval collar  
 0,75 mm<sup>2</sup> - 8 mm



part no.	material	surface		
A 1660800	Cu-ETP	tin-plated	0,073/1000	1.000
	<b>l</b>	<b>d<sub>1</sub></b>	<b>b</b>	<b>s</b>
<b>in mm:</b>	<b>8,6</b>	<b>1,8</b>	<b>2,8</b>	<b>0,15</b>

date: 04.07.2014