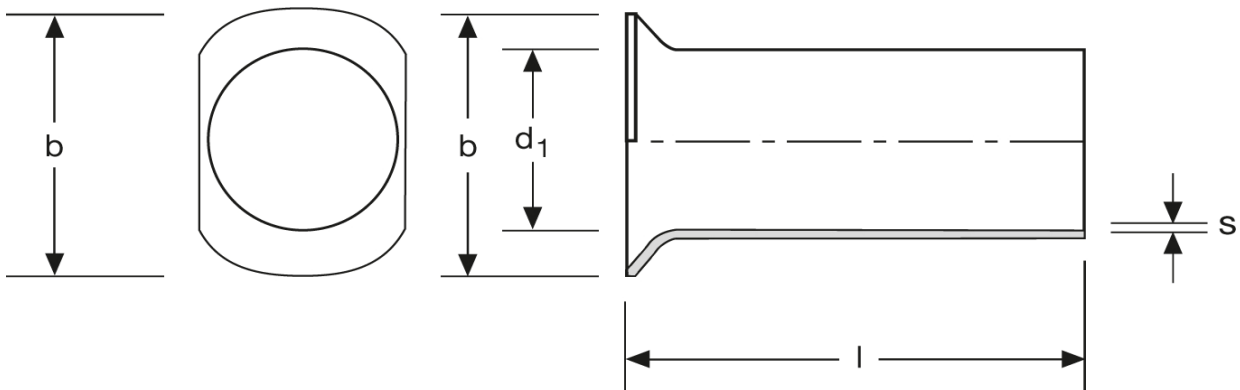


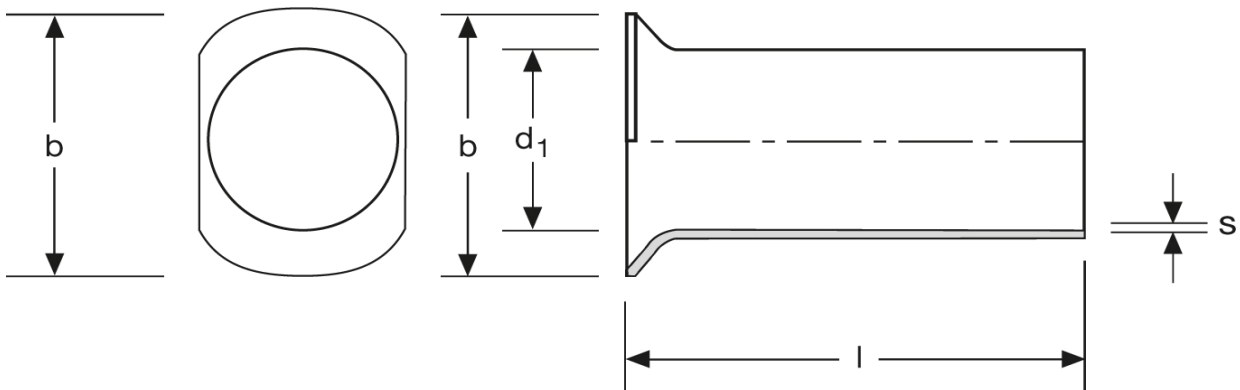
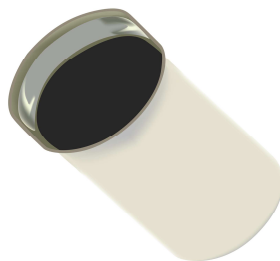
Twin - Aderendhülsen
Typ B - ovaler Kragen
0,75 mm² - 10 mm



Art.Nr.	Werkstoff	Oberfläche		
A 1661000	Cu-ETP	galv. Sn	0,095/1000	1.000
	l	d_1	b	s
in mm:	10,6	1,8	2,8	0,15

Stand: 04.07.2014

Twin cord end-sleeves
 type B - oval collar
 0,75 mm² - 10 mm



part no.	material	surface		
A 1661000	Cu-ETP	tin-plated	0,095/1000	1.000
	l	d₁	b	s
in mm:	10,6	1,8	2,8	0,15

date: 04.07.2014