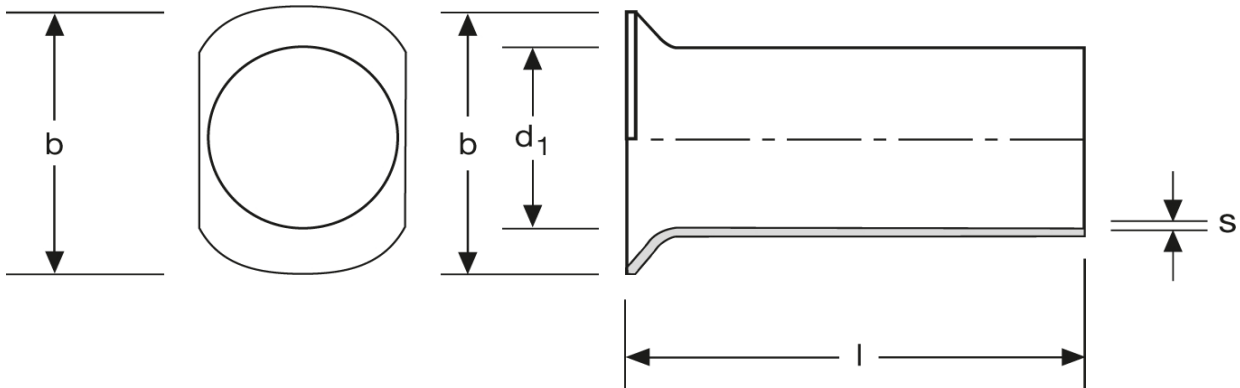


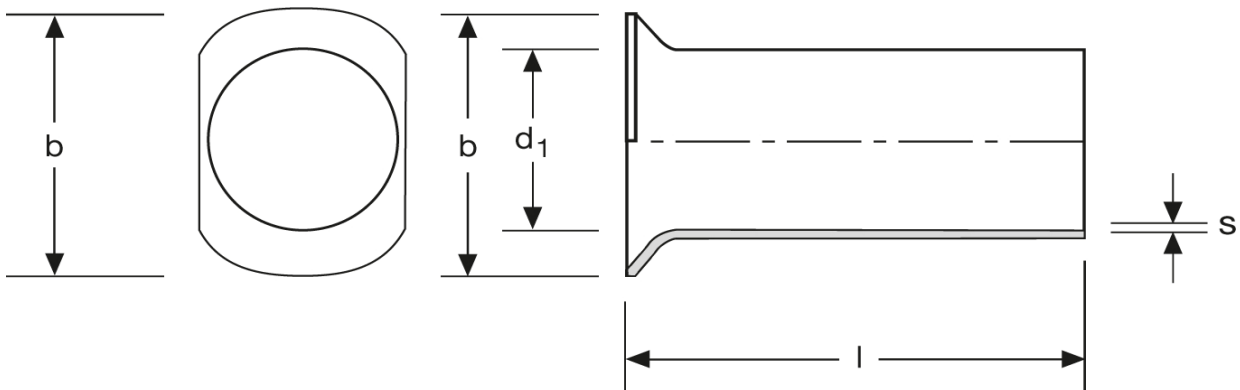
**Twin - Aderendhülsen**  
Typ B - ovaler Kragen  
1,5 mm<sup>2</sup> - 8 mm



Art.Nr.	Werkstoff	Oberfläche		
A 1680800	Cu-ETP	galv. Sn	0,085/1000	1.000
	$l$	$d_1$	$b$	$s$
in mm:	8,8	2,3	3,6	0,15

Stand: 04.07.2014

**Twin cord end-sleeves**  
type B - oval collar  
1,5 mm<sup>2</sup> - 8 mm



part no.	material	surface		
A 1680800	Cu-ETP	tin-plated	0,085/1000	1.000
	<b>l</b>	<b>d<sub>1</sub></b>	<b>b</b>	<b>s</b>
<b>in mm:</b>	<b>8,8</b>	<b>2,3</b>	<b>3,6</b>	<b>0,15</b>

date: 04.07.2014