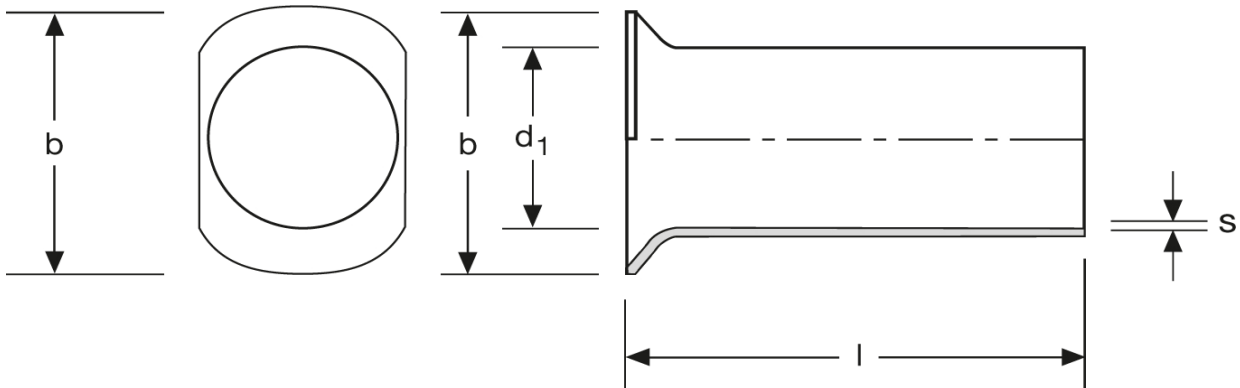


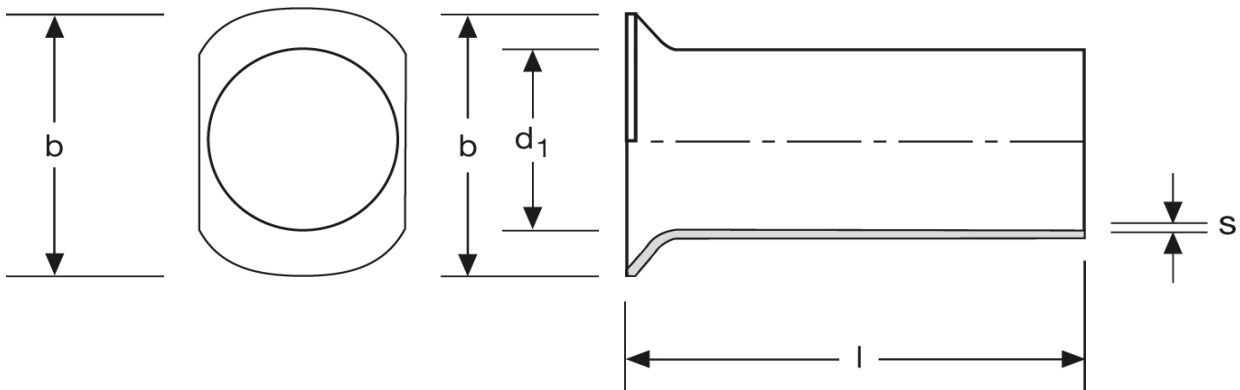
**Twin - Aderendhülsen**  
 Typ B - ovaler Kragen  
 1,5 mm<sup>2</sup> - 12 mm



Art.Nr.	Werkstoff	Oberfläche		
A 1681200	Cu-ETP	galv. Sn	0,145/1000	1.000
	<b>l</b>	<b>d<sub>1</sub></b>	<b>b</b>	<b>s</b>
<b>in mm:</b>	12,7	2,3	3,6	0,15

Stand: 04.07.2014

**Twin cord end-sleeves**  
 type B - oval collar  
 1,5 mm<sup>2</sup> - 12 mm



part no.	material	surface		
A 1681200	Cu-ETP	tin-plated	0,145/1000	1.000
	<b>l</b>	<b>d<sub>1</sub></b>	<b>b</b>	<b>s</b>
<b>in mm:</b>	12,7	2,3	3,6	0,15

date: 04.07.2014