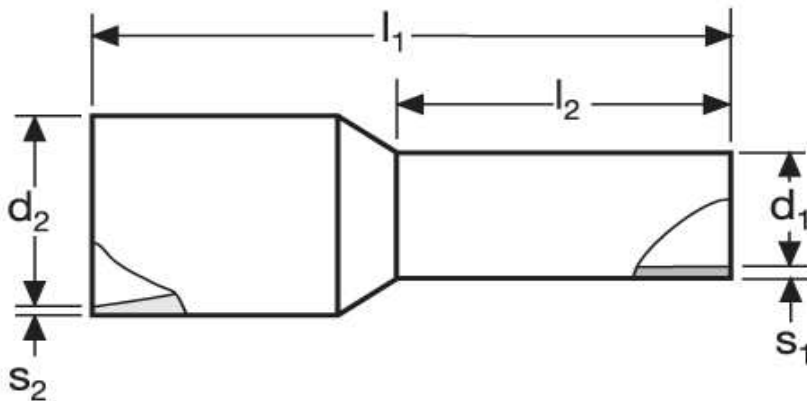
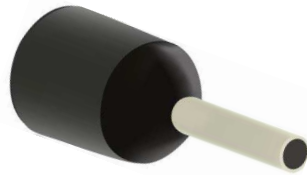


## Aderendhülsen für kurzschluss sichere Leitungen 6 mm<sup>2</sup> N



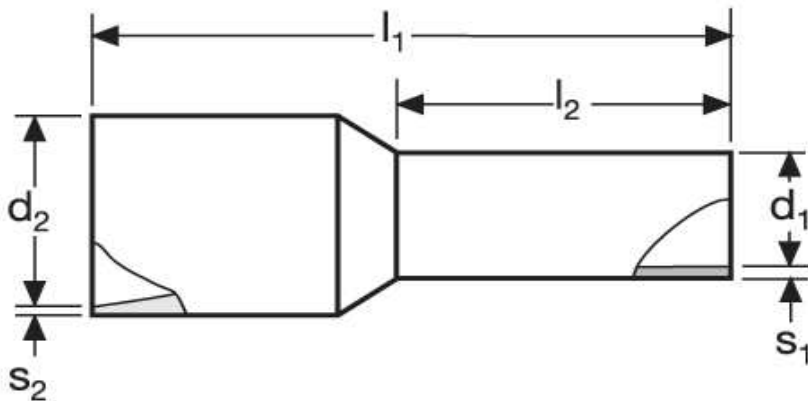
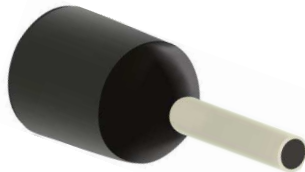
Material	Isolation		
E-Cu, gal. Sn	PA	0,674 / 1000	100

	$l_1$	$l_2$	$d_1$	$s_1$
in mm:	23,1	12	3,8	0,2

	$d_2$	$s_2$	WE	TM	DIN
	8,3	0,6	A 20912-SI schwarz	A 22912-SI grün	A 24712-SI gelb

Stand: 11.07.2014

**Cord end - sleeves**  
for short-circuit resistant conductors  
6 mm<sup>2</sup> N



material	insulation		
E-Cu, gal. Sn	PA	0,674 / 1000	100

	$l_1$	$l_2$	$d_1$	$s_1$
in mm:	23,1	12	3,8	0,2

		WE	TM	DIN
$d_2$	$s_2$	A 20912-SI	A 22912-SI	A 24712-SI
8,3	0,6	black 	green 	yellow 

date: 11.07.2014