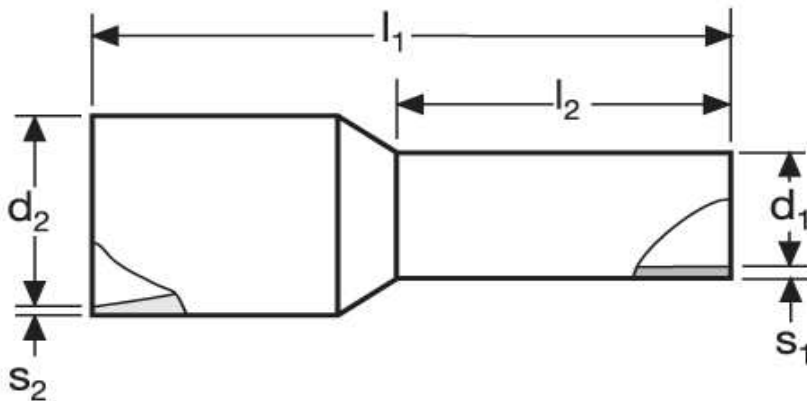
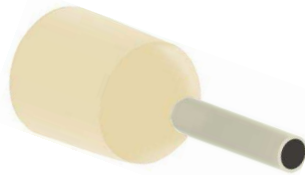


Aderendhülsen für kurzschluss sichere Leitungen 10 mm² N



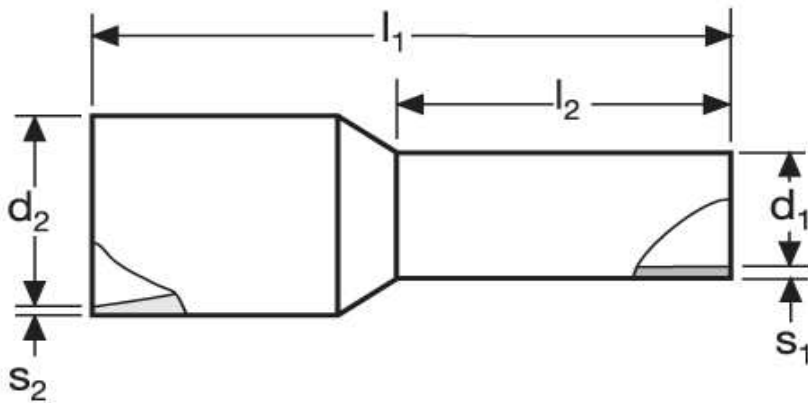
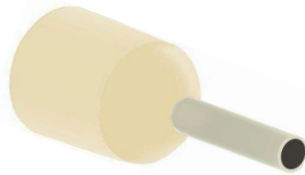
Material	Isolation		
E-Cu, gal. Sn	PA	0,789 / 1000	100

	l_1	l_2	d_1	s_1
in mm:	23,7	12	4,5	0,2

	WE	TM	DIN
d_2	A 21012-SI	A 23012-SI	A 24812-SI
s_2	elfenbein	braun	rot

Stand: 11.07.2014

Cord end - sleeves
for short-circuit resistant conductors
10 mm² N



material	insulation		
E-Cu, gal. Sn	PA	0,789 / 1000	100

	l_1	l_2	d_1	s_1
in mm:	23,7	12	4,5	0,2

	d_2	s_2	WE	TM	DIN
	9,8	0,7	A 21012-SI ivory 	A 23012-SI brown 	A 24812-SI red

date: 11.07.2014