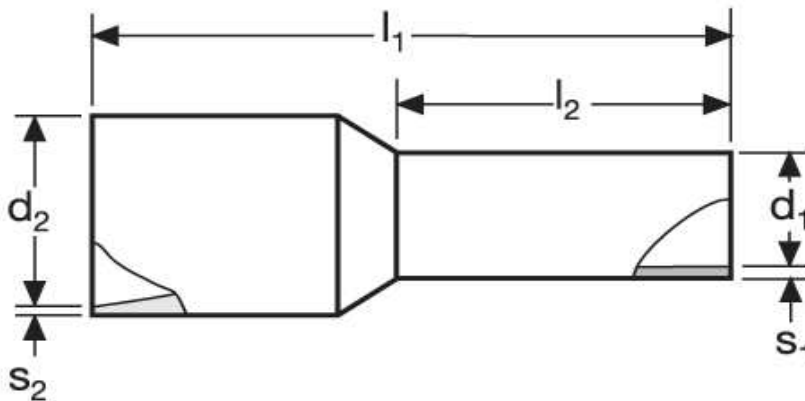
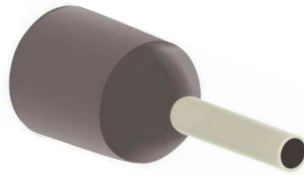


## Aderendhülsen für kurzschluss sichere Leitungen 2,5 mm<sup>2</sup> N



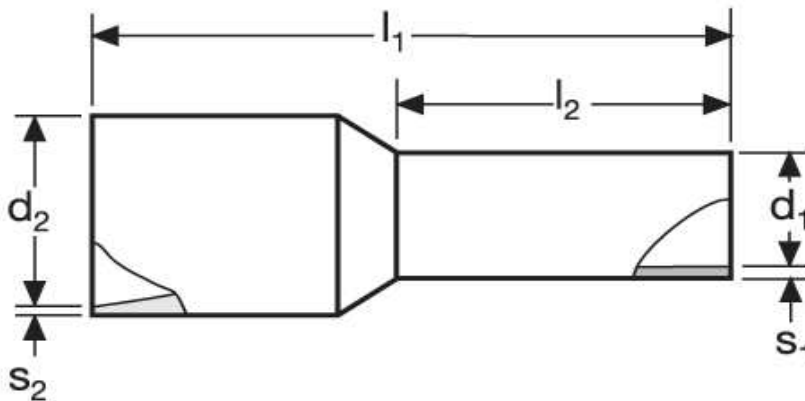
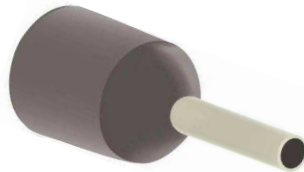
Material	Isolation		
E-Cu, gal. Sn	PA	0,308 / 1000	100

	$l_1$	$l_2$	$d_1$	$s_1$
in mm:	17,6	8	2,3	0,15

		WE	TM	DIN
$d_2$	$s_2$	A 20708-SI	A 22708-SI	A 24508-SI
7,8	0,6	blau 	grau 	blau 

Stand: 17.07.2014

**Cord end - sleeves**  
for short-circuit resistant conductors  
2,5 mm<sup>2</sup> N



		<b>material</b>	<b>insulation</b>		
		E-Cu, gal. Sn	PA	0,308 / 1000	100
		<b>l<sub>1</sub></b>	<b>l<sub>2</sub></b>	<b>d<sub>1</sub></b>	<b>s<sub>1</sub></b>
<b>in mm:</b>		17,6	8	2,3	0,15
		<b>WE</b>	<b>TM</b>	<b>DIN</b>	
<b>d<sub>2</sub></b>	<b>s<sub>2</sub></b>	A 20708-SI	A 22708-SI	A 24508-SI	
7,8	0,6	blue 	grey 	blue 	

date: 17.07.2014