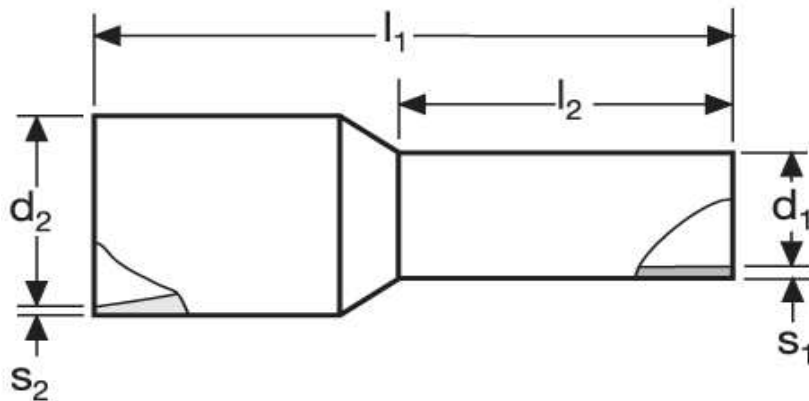


Aderendhülsen für kurzschluss sichere Leitungen 1,5 mm² N



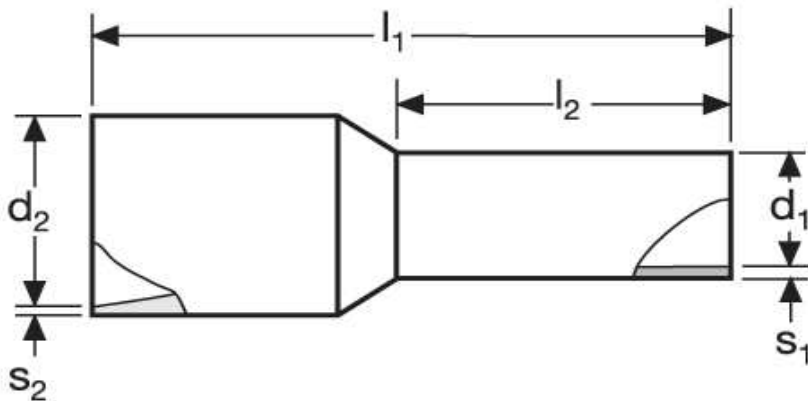
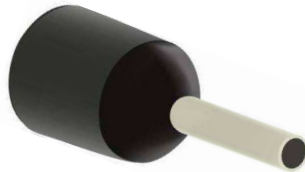
Material	Isolation		
E-Cu, gal. Sn	PA	0,239 / 1000	100

	l_1	l_2	d_1	s_1
in mm:	17,4	8	1,8	0,15

		WE	TM	DIN
d_2	s_2	A 20608-SI	A 22608-SI	A 24408-SI
6,8	0,6	rot 	schwarz 	schwarz

Stand: 05.08.2014

Cord end - sleeves
for short-circuit resistant conductors
1,5 mm² N



material	insulation		
E-Cu, gal. Sn	PA	0,239 / 1000	100

	l_1	l_2	d_1	s_1
in mm:	17,4	8	1,8	0,15

		WE	TM	DIN
d_2	s_2	A 20608-SI	A 22608-SI	A 24408-SI
6,8	0,6	red 	black 	black

date: 05.08.2014