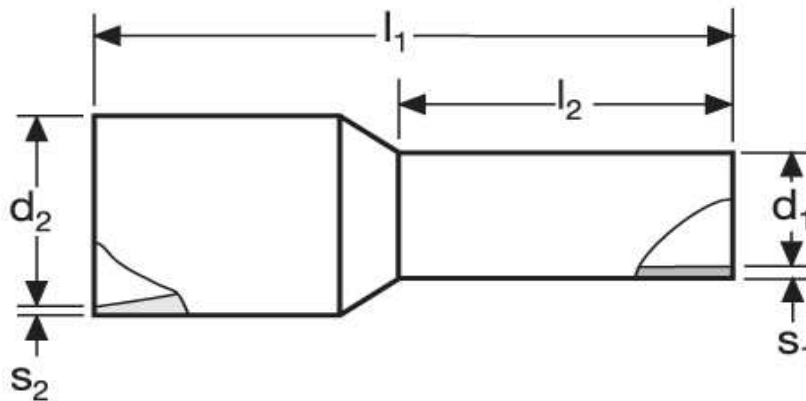
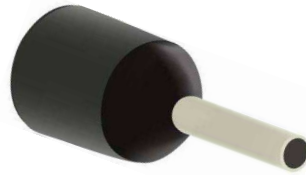


Aderendhülsen für kurzschluss sichere Leitungen 1,5 mm² L



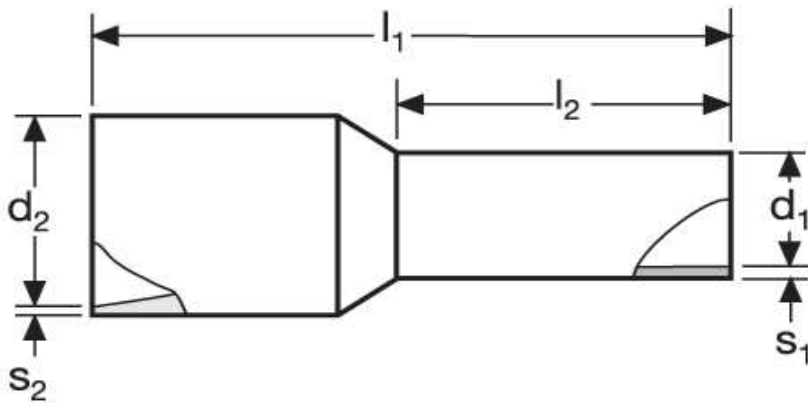
Material	Isolation		
E-Cu, gal. Sn	PA	0,255 / 1000	100

	l_1	l_2	d_1	s_1
in mm:	19,4	10	1,8	0,15

		WE	TM	DIN
d_2	s_2	A 20610-SI	A 22610-SI	A 24410-SI
6,8	0,6	rot 	schwarz 	schwarz

Stand: 05.08.2014

Cord end - sleeves
for short-circuit resistant conductors
1,5 mm² L



material	insulation		
E-Cu, gal. Sn	PA	0,255 / 1000	100

	l_1	l_2	d_1	s_1
in mm:	19,4	10	1,8	0,15

	d_2	s_2	WE	TM	DIN
	6,8	0,6	A 20610-SI	A 22610-SI	A 24410-SI
			red	black	black

date: 05.08.2014