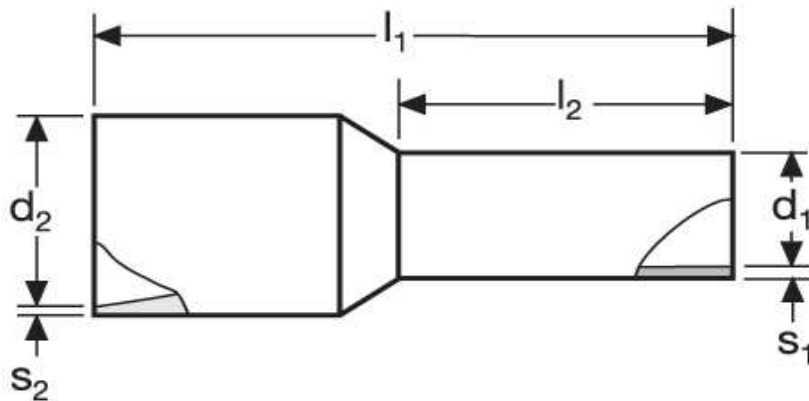
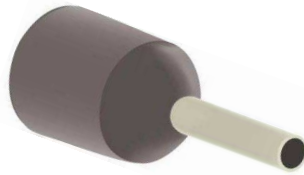


Aderendhülsen für kurzschluss sichere Leitungen 4 mm² N



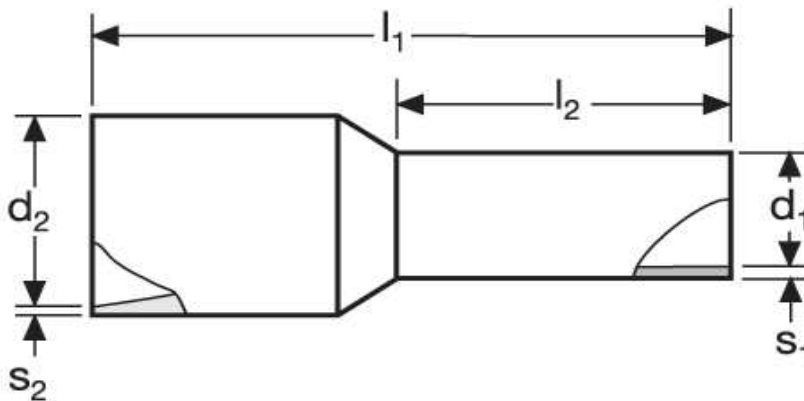
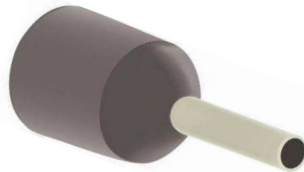
Material	Isolation		
E-Cu, gal. Sn	PA	0,438 / 1000	100

	l_1	l_2	d_1	s_1
in mm:	19,5	10	2,9	0,2

		WE	TM	DIN
d_2	s_2	A 20810-SI	A 22810-SI	A 24610-SI
7,8	0,6	grau 	orange 	grau

Stand: 05.08.2014

Cord end - sleeves
for short-circuit resistant conductors
4 mm² N



material	insulation		
E-Cu, gal. Sn	PA	0,438 / 1000	100

	l_1	l_2	d_1	s_1
in mm:	19,5	10	2,9	0,2

		WE	TM	DIN
d_2	s_2	A 20810-SI	A 22810-SI	A 24610-SI
7,8	0,6	grey 	orange 	grey

date: 05.08.2014