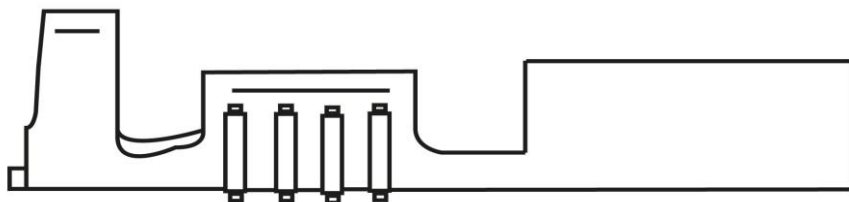
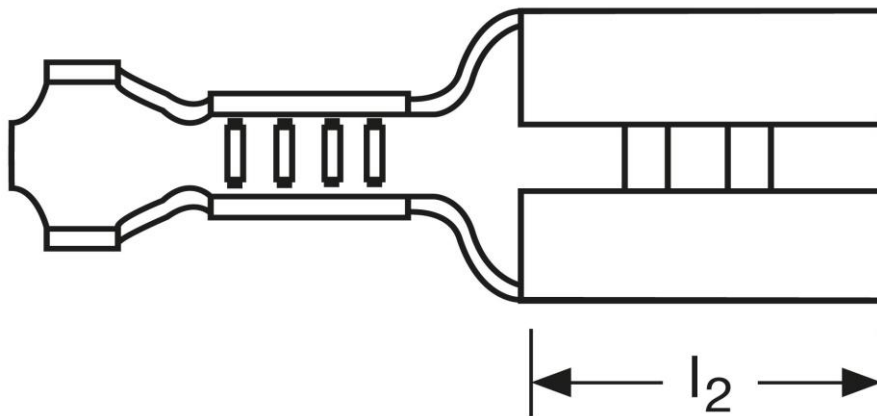
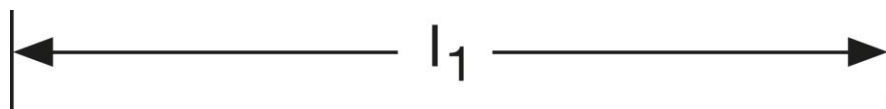


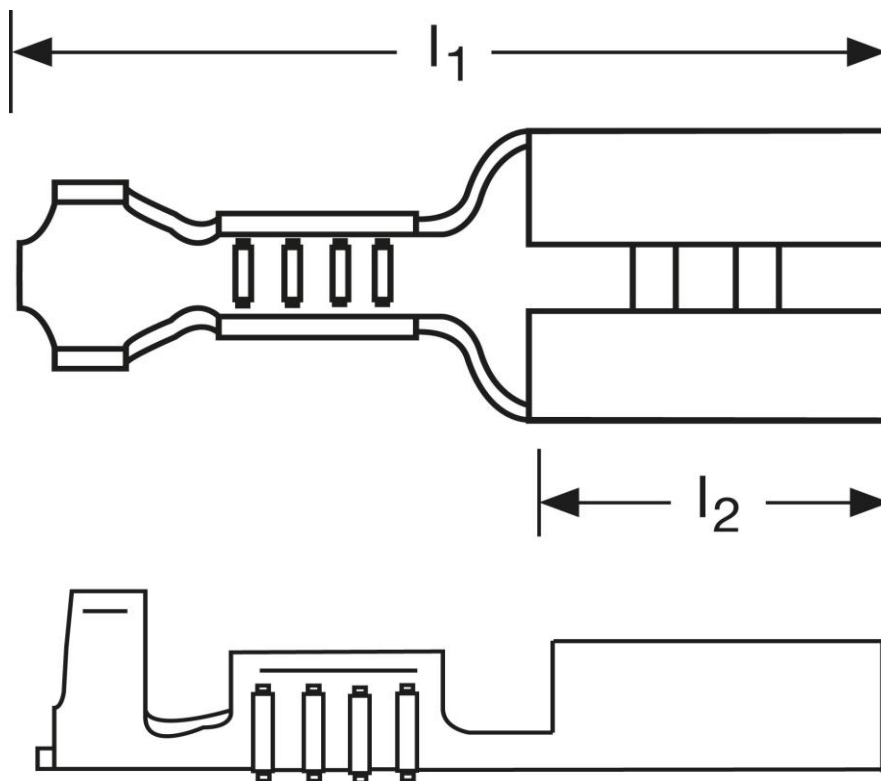
Flachsteckhülsen 1 mm²

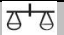



Art.Nr.	Werkstoff	Oberfläche		
F502280012	Messing	galv. Sn	0,25/1000	1.000
	l₁	l₂	Steckgröße	
in mm:	12,5	5	2,8 - 0,5	

Stand: 11.09.2014

Female disconnects 1 mm²



part no.	material	surface		
F502280012	brass	tin-plated	0,25/1000	1.000
	l_1	l_2	tab-size	
in mm:	12,5	5	2,8 - 0,5	

date: 11.09.2014