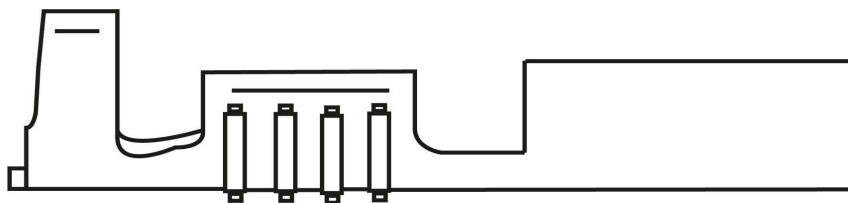
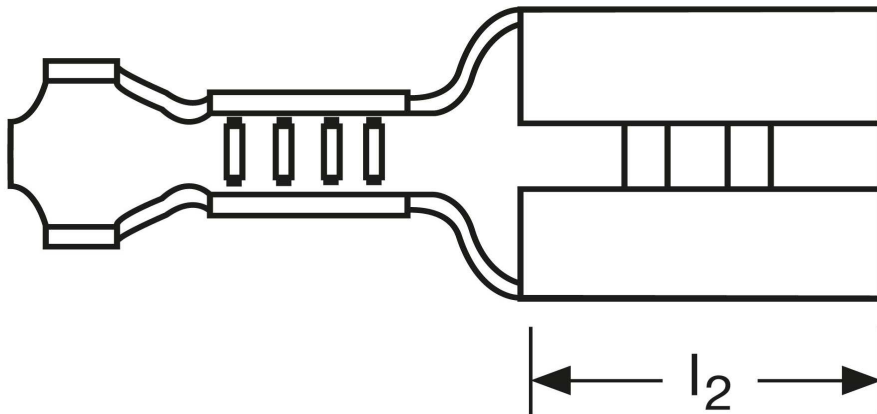
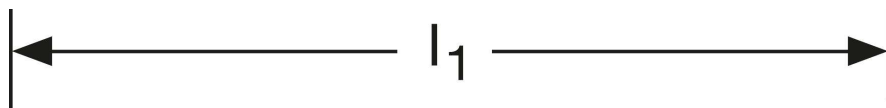
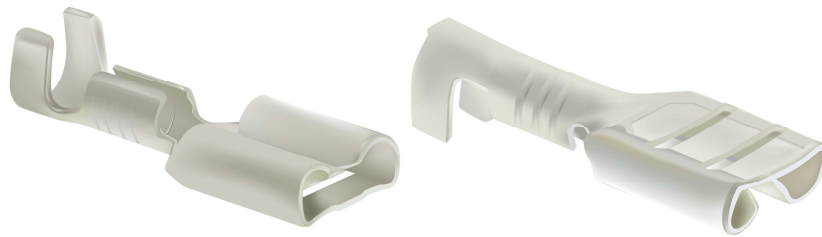


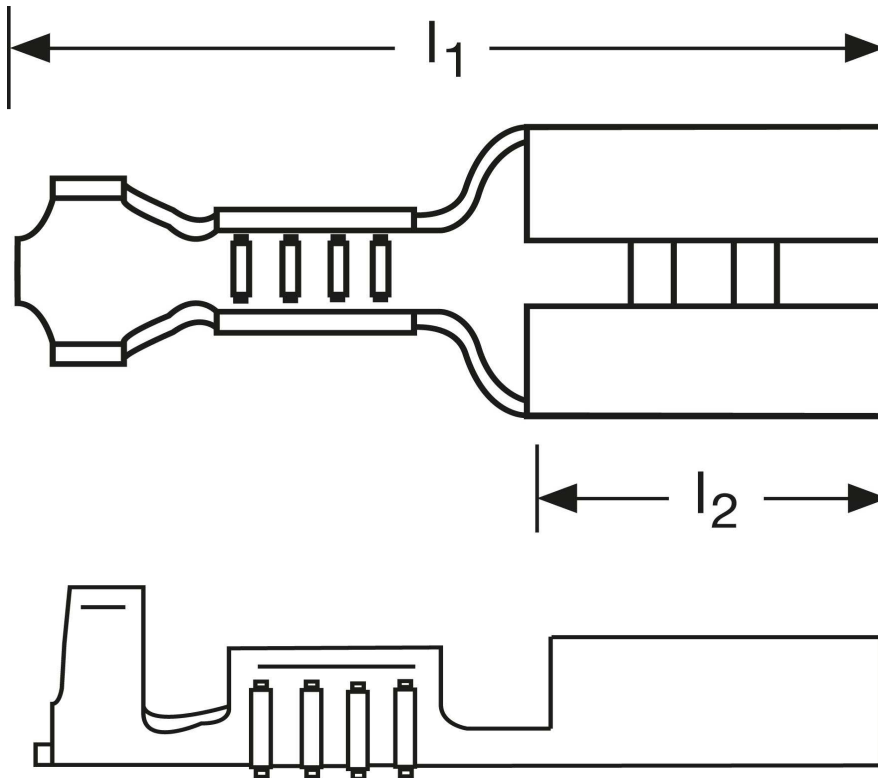
Flachsteckhülsen 1 mm²



Art.Nr.	Werkstoff	Oberfläche		
F502480012	Messing	galv. Sn	0,50/1000	1.000
	l_1	l_2	Steckgröße	
in mm:	15,6	6,4	4,8 - 0,5	

Stand: 11.09.2014

Female disconnects 1 mm²



part no.	material	surface		
F502480012	brass	tin-plated	0,50/1000	1.000
	l_1	l_2	tab-size	
in mm:	15,6	6,4	4,8 - 0,5	

date: 11.09.2014