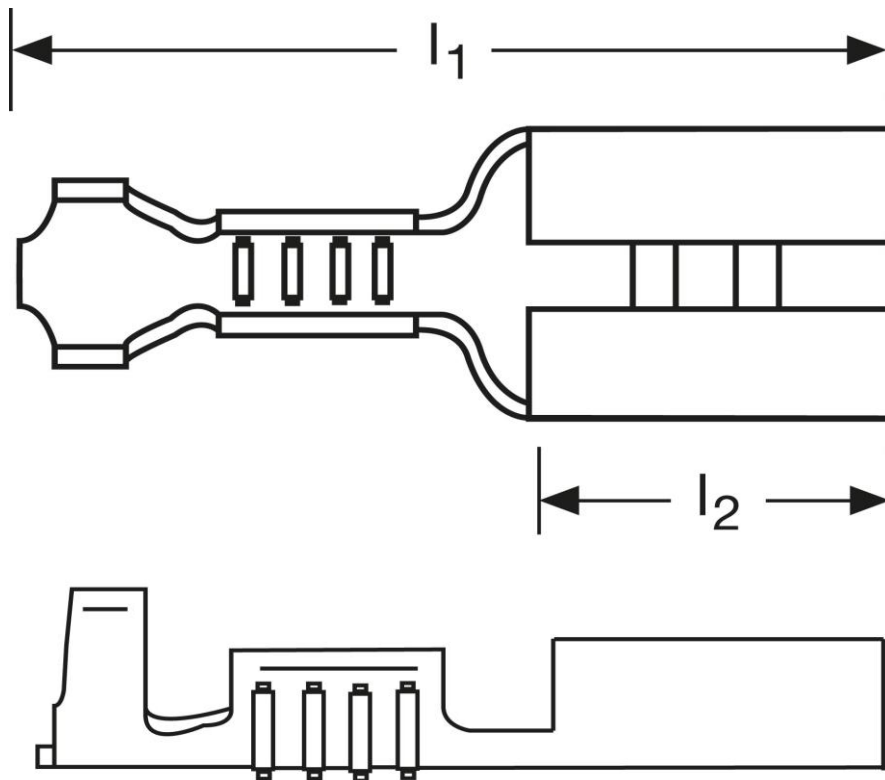
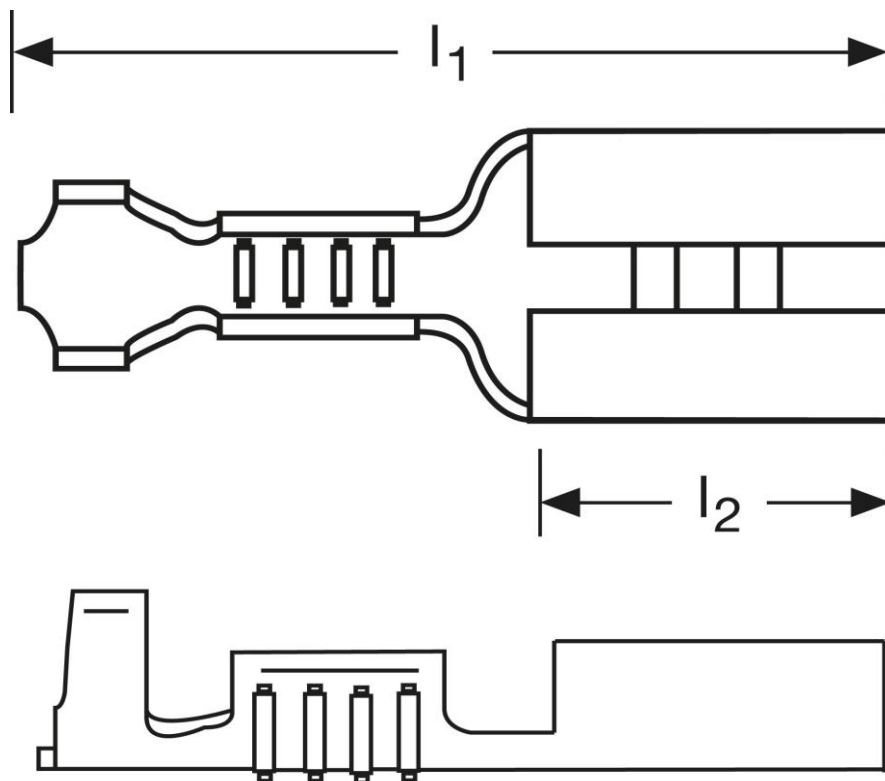


Flachsteckhülsen vorgerollt 1 mm²



Art.Nr.	Werkstoff	Oberfläche	⚖	📦
F502630012.1	Messing	galv. Sn	0,82/1000	1.000
	l_1	l_2	Steckgröße	
in mm:	19,2	7,4	6,3 - 0,8	

Female disconnects
 pre-rounded
 1 mm²



part no.	material	surface		
F502630012.1	brass	tin-plated	0,82/1000	1.000
	l_1	l_2	tab-size	
in mm:	19,2	7,4	6,3 - 0,8	

date: 07.02.2019