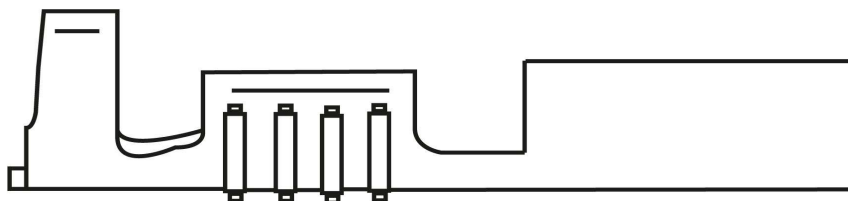
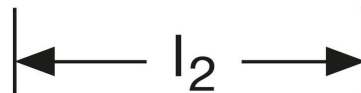
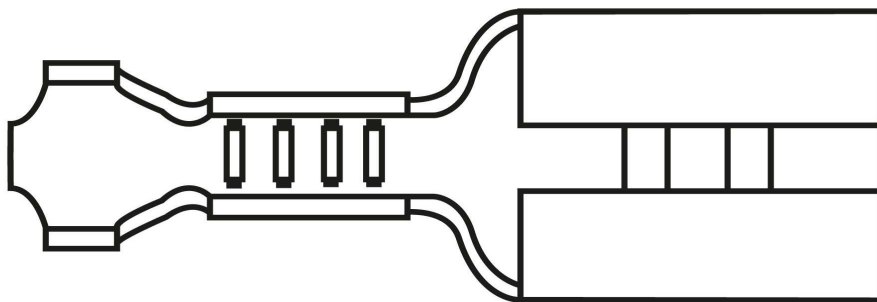
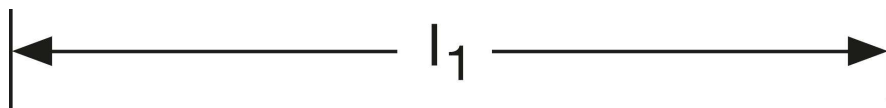


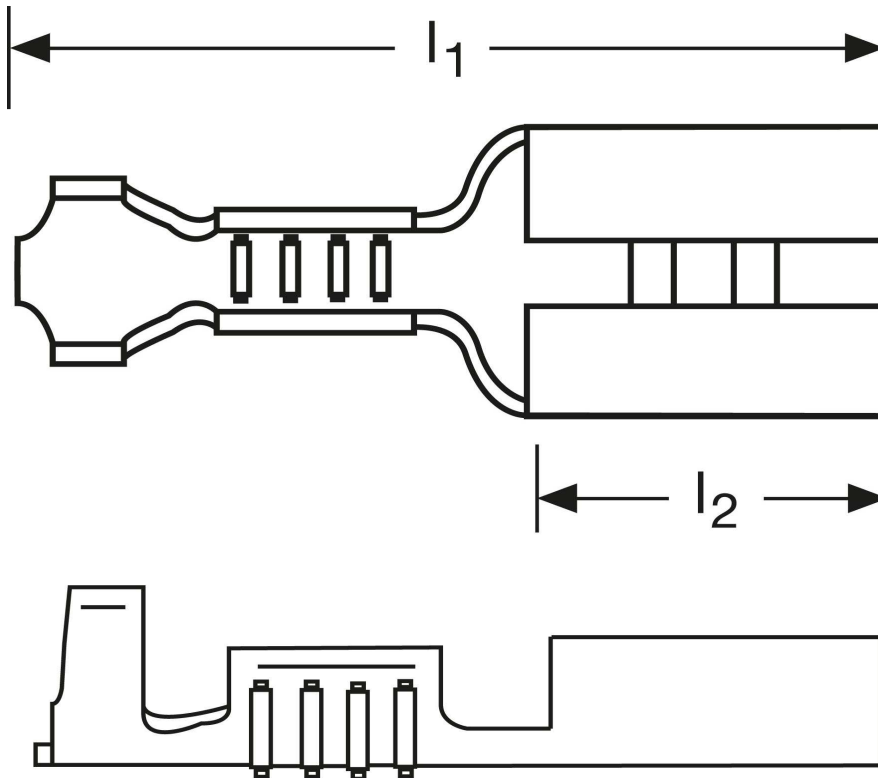
Flachsteckhülsen 2,5 mm²



Art.Nr.	Werkstoff	Oberfläche		
F503481012	Messing	galv. Sn	0,54/1000	1.000
	l_1	l_2	Steckgröße	
in mm:	16	6,3	4,8 - 0,8	

Stand: 12.09.2014

Female disconnects 2,5 mm²



part no.	material	surface		
F503481012	brass	tin-plated	0,54/1000	1.000
	l_1	l_2	tab-size	
in mm:	16	6,3	4,8 - 0,8	

date: 12.09.2014