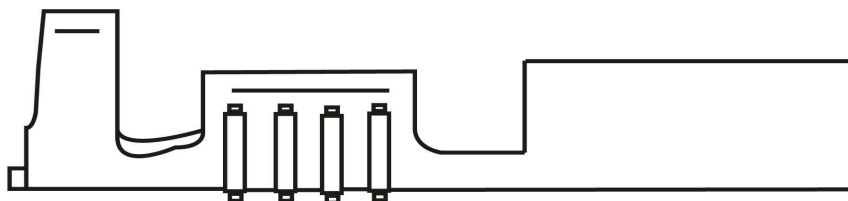
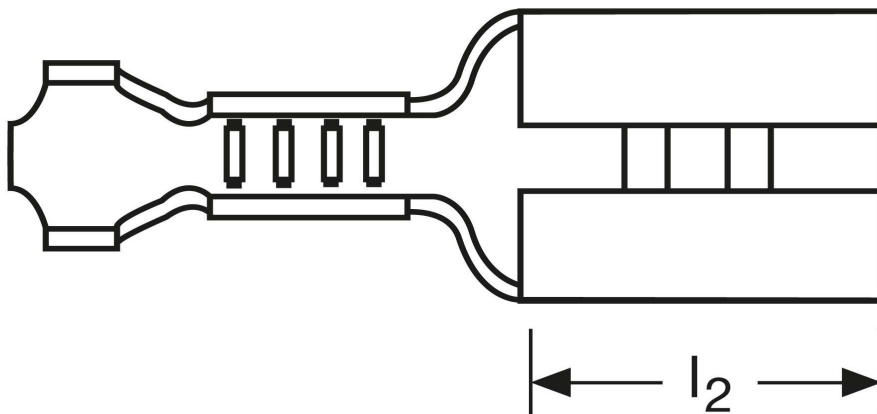
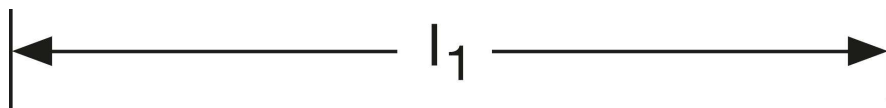


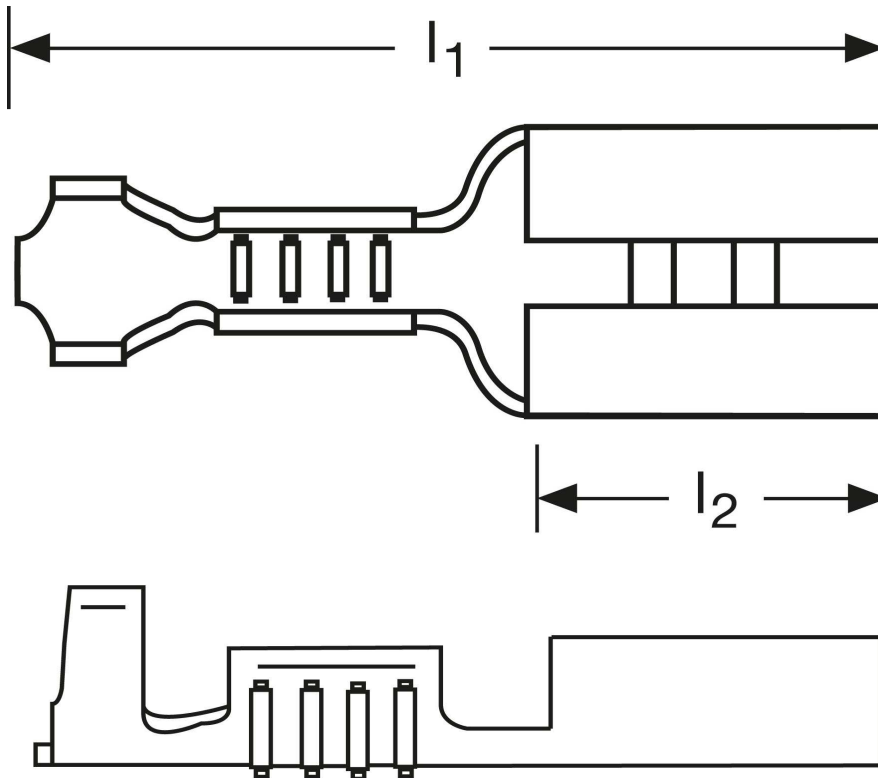
Flachsteckhülsen 2,5 mm²



Art.Nr.	Werkstoff	Oberfläche		
F503630011	Messing	blank	0,92/1000	1.000
	l_1	l_2	Steckgröße	
in mm:	19,2	7,6	6,3 - 0,8	

Stand: 12.09.2014

Female disconnects 2,5 mm²



part no.	material	surface		
F503630011	brass	bare	0,92/1000	1.000
	l_1	l_2	tab-size	
in mm:	19,2	7,6	6,3 - 0,8	

date: 12.09.2014