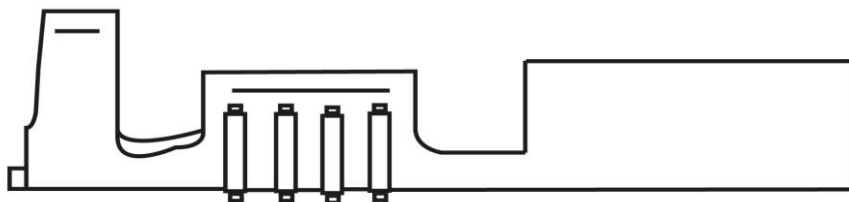
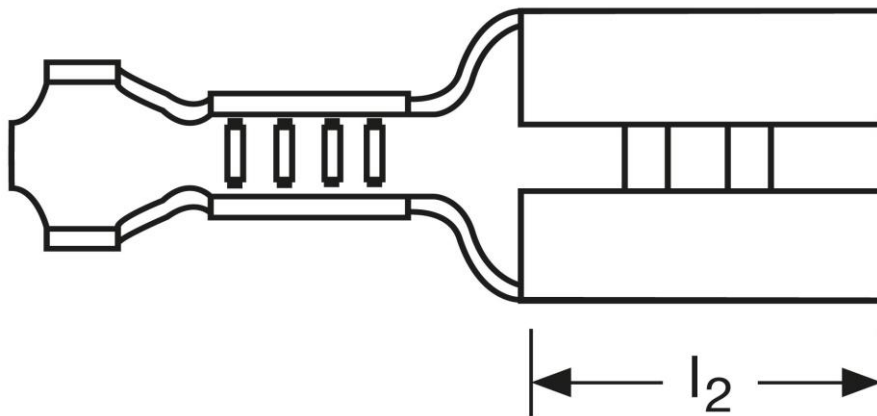
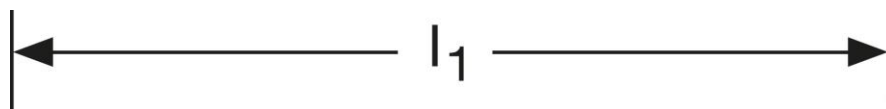


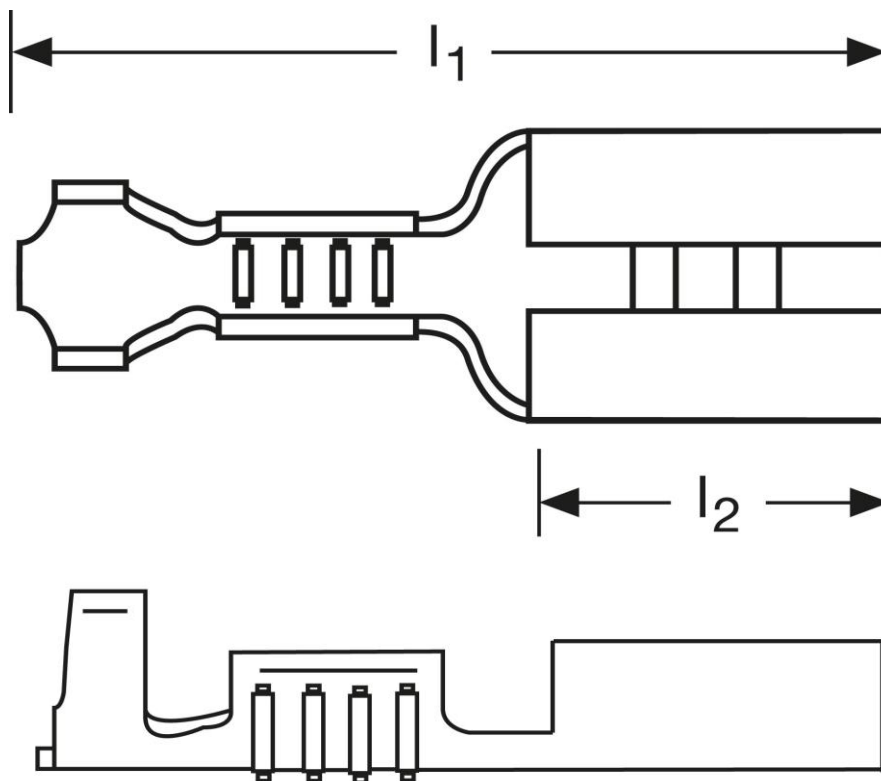
## Flachsteckhülsen 2,5 mm<sup>2</sup>





Art.Nr.	Werkstoff	Oberfläche	⌀ <sup>+</sup> <sub>-</sub>	
F503630022	Bronze	galv. Sn	0,92/1000	500
	$l_1$	$l_2$	Steckgröße	
in mm:	19,2	7,4	6,3 - 0,8	

Stand: 25.02.2019

## Female disconnects 2,5 mm<sup>2</sup>



part no.	material	surface		
F503630022	bronze	tin-plated	0,92/1000	500
	$l_1$	$l_2$	tab-size	
in mm:	19,2	7,4	6,3 - 0,8	

date: 25.02.2019