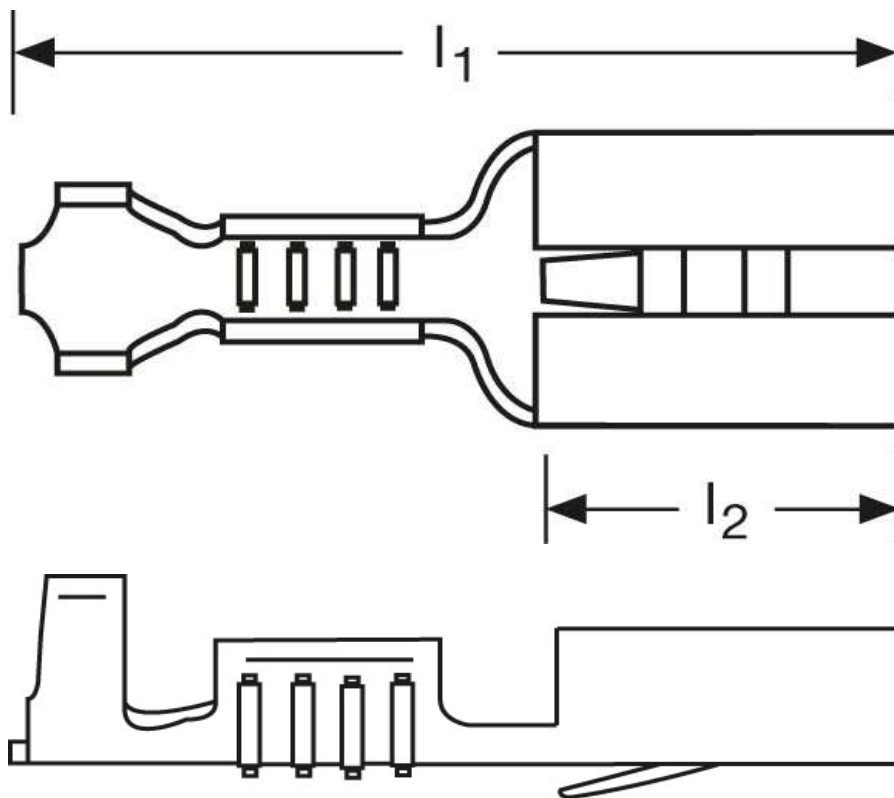
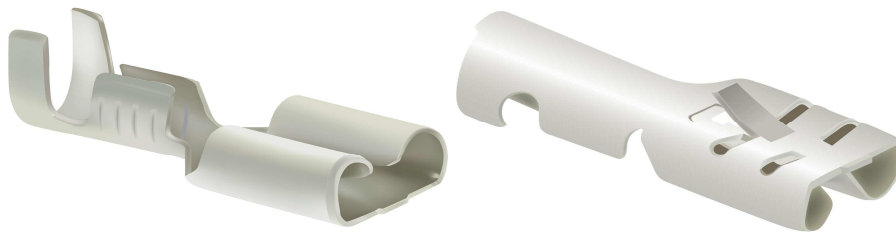


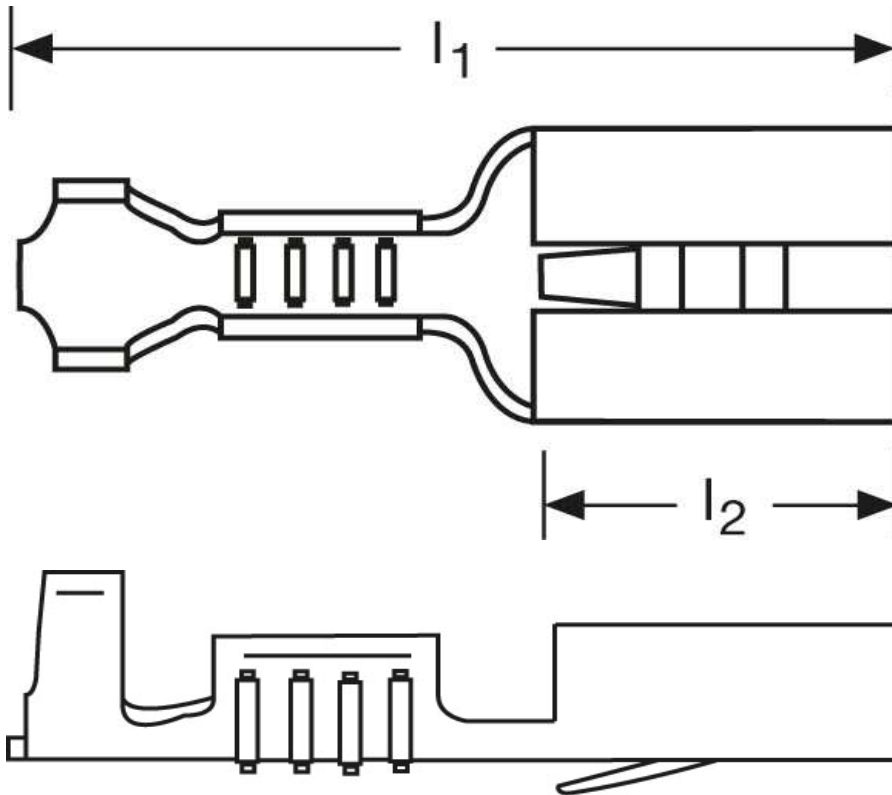
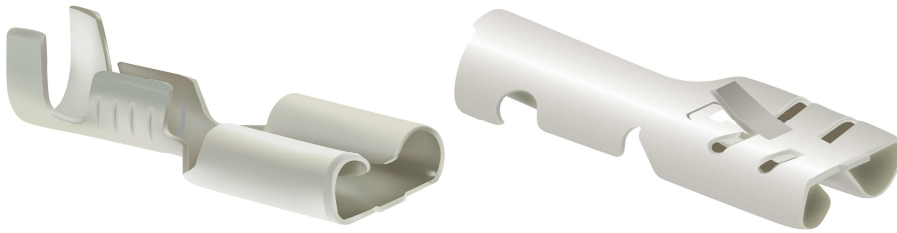
## Flachsteckhülsen mit Rastzunge 6 mm<sup>2</sup>



Art.Nr.	Werkstoff	Oberfläche	$\frac{\sigma}{\sigma_{\text{Nenn}}}$	
F504630111	Messing	blank	0,90/1000	1.000
	$l_1$	$l_2$	Steckgröße	
in mm:	19,2	7,4	6,3 - 0,8	

Stand: 12.09.2014

**Female disconnects**  
 with retaining snap  
 6 mm<sup>2</sup>



part no.	material	surface		
F504630111	brass	bare	0,90/1000	1.000
	$l_1$	$l_2$	tab-size	
in mm:	19,2	7,4	6,3 - 0,8	

date: 12.09.2014