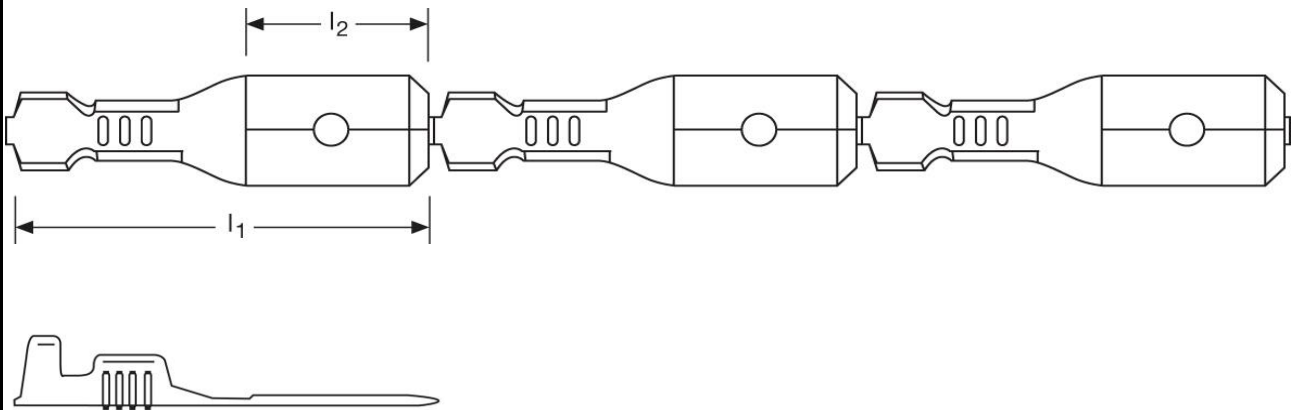


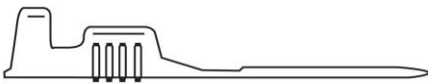
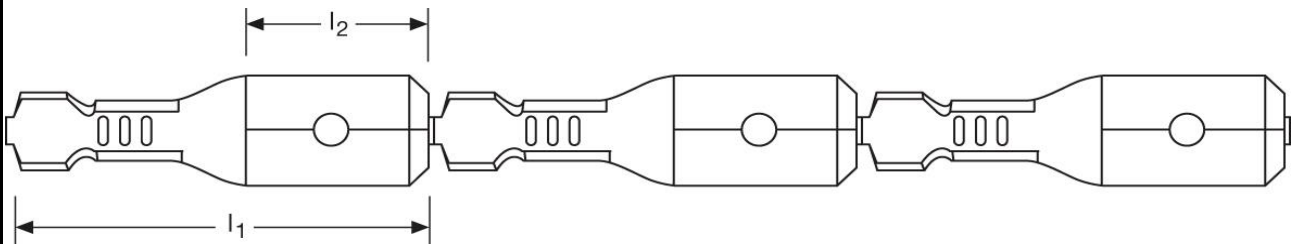
## Flachstecker Bandware 0,5 - 1 mm<sup>2</sup>



Art.Nr.	Werkstoff	Oberfläche	$\bar{\Delta}$	
FB 507281012	Messing	verzinnt	0,38/1000	500
	$l_1$	$l_2$	Steckgröße	
in mm:	12,6	5,5	2,8 - 0,8	

Stand: 03.08.2016

**Male disconnects on reel**  
**0,5 - 1 mm<sup>2</sup>**



<b>part no.</b>	<b>material</b>	<b>surface</b>		
FB 507281012	brass	tin-plated	0,38/1000	500
	<b>l<sub>1</sub></b>	<b>l<sub>2</sub></b>	<b>tab-size</b>	
<b>in mm:</b>	12,6	5,5	2,8 - 0,8	

date: 03.08.2016