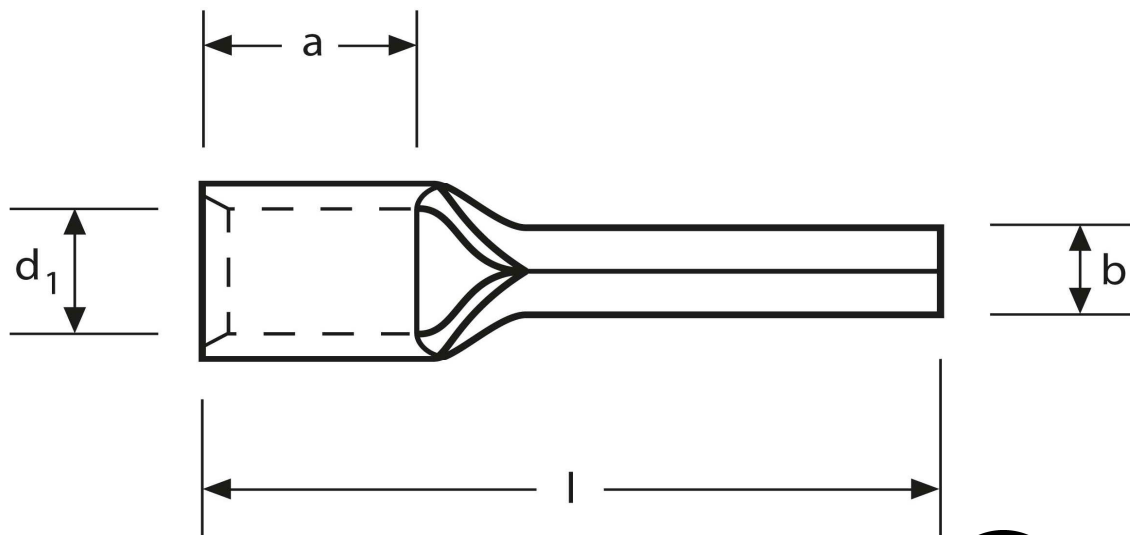
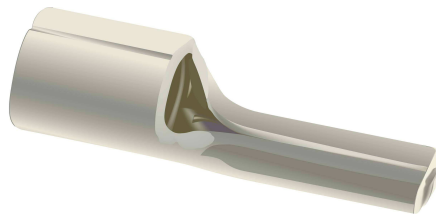


Quetschkabelschuhe

Stiftform

25 mm²

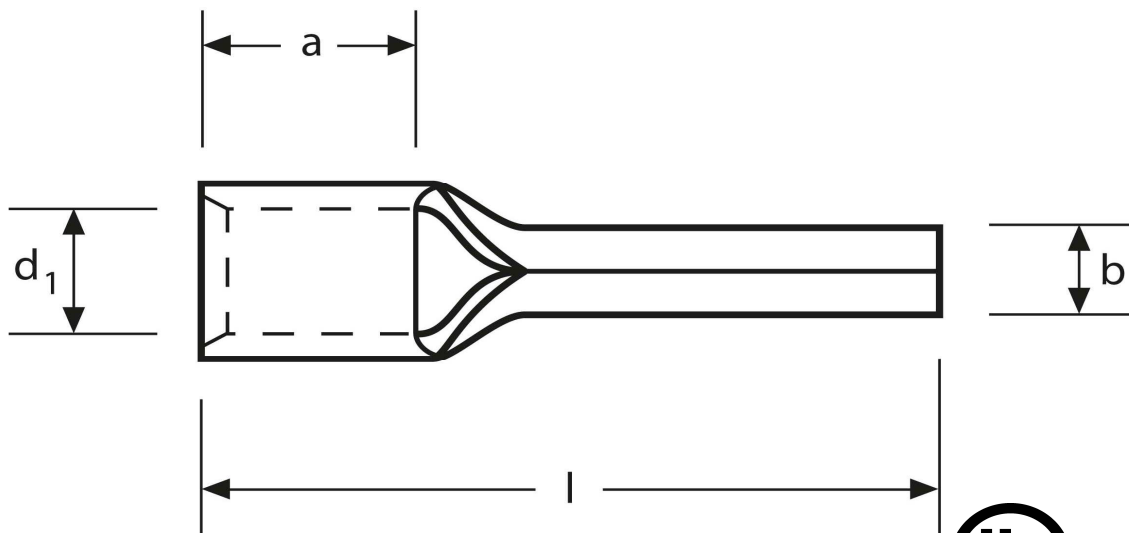
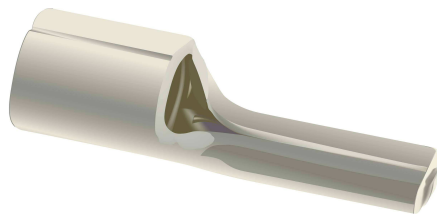


Art.Nr.	Werkstoff	Oberfläche		
K 331025	E-CU	galv. Sn	6,30 / 1000	200
	b	d₁	l	
in mm:	6,8	7,0	33,5	
	a	s		
in mm:	13,5	1,2		

Stand: 07.08.2014

Solderless terminals

pin-type
 25 mm²



part no.	material	surface		
K 331025	E-CU	tin-plated	6,30 / 1000	200
	b	d₁	l	
in mm:	6,8	7,0	33,5	
	a	s		
in mm:	13,5	1,2		

date: 07.08.2014