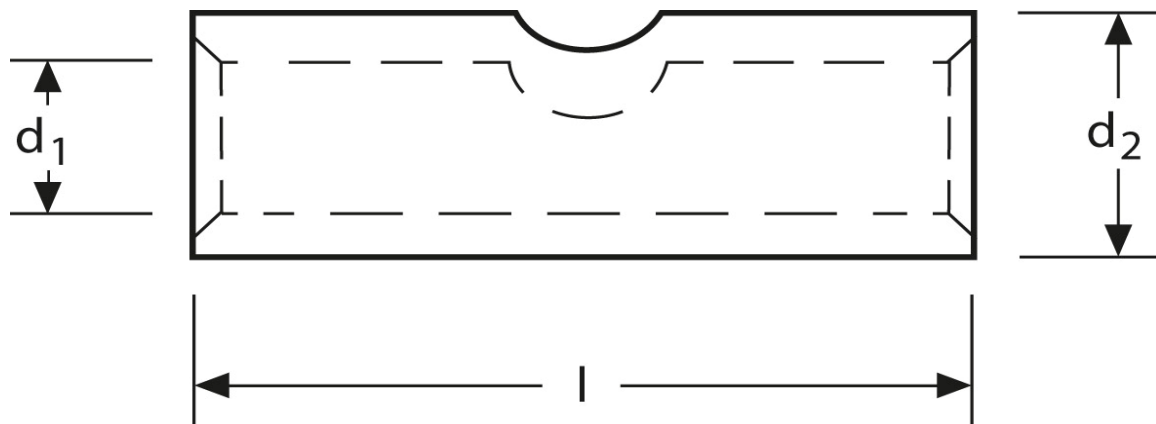
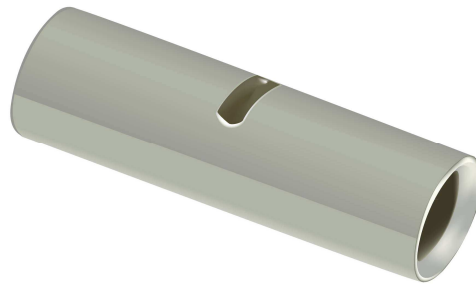


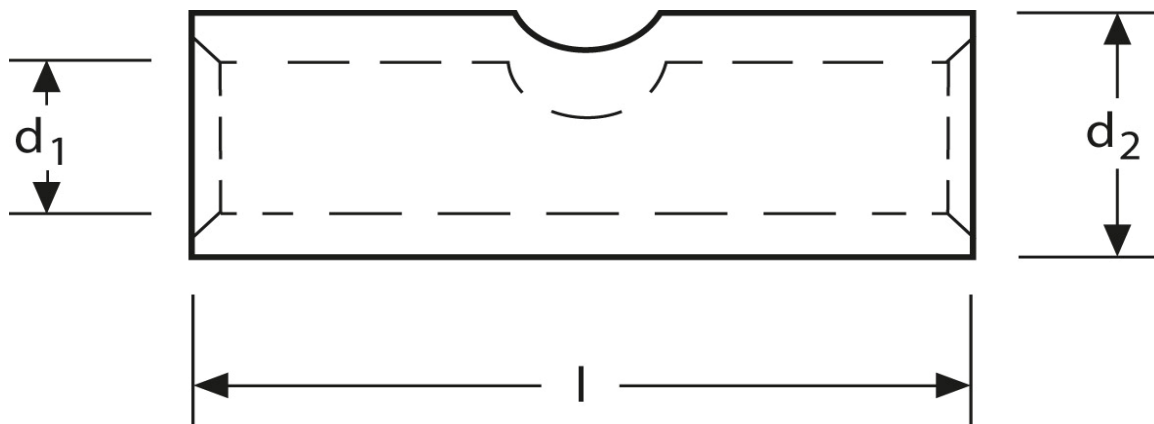
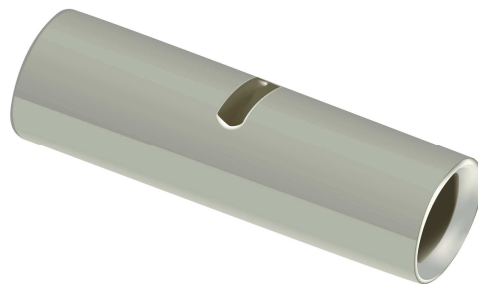
Stoßverbinder 1,5 mm²



Art.Nr.	Werkstoff	Oberfläche		
K 332001	E-CU	galv. Sn	0,90 / 1000	1.000
	d_1	l	d_2	s
in mm:	1,6	15	3,2	0,8

Stand: 07.08.2014

Butt - connectors
1,5 mm²



part no.	material	surface		
K 332001	E-CU	tin-plated	0,90 / 1000	1.000
	d_1	l	d_2	s
in mm:	1,6	15	3,2	0,8

date: 07.08.2014