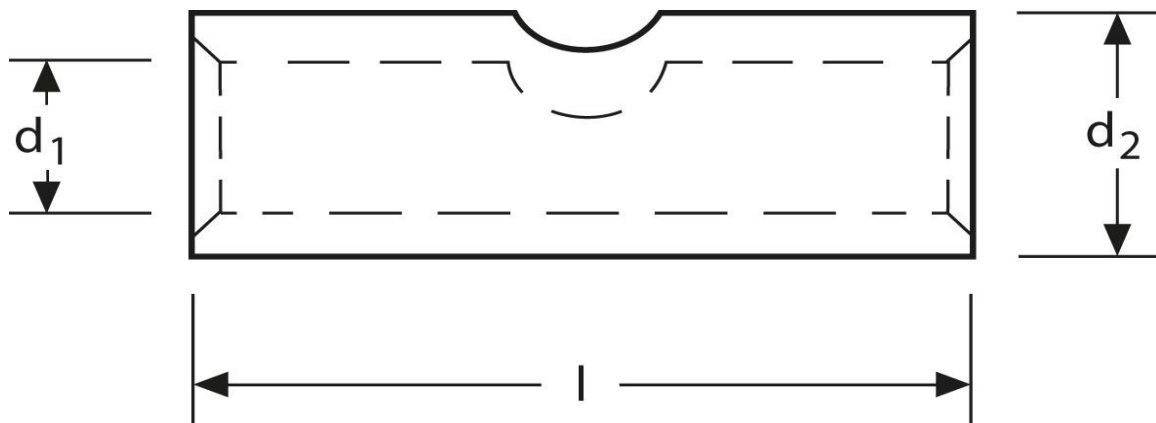


## Stoßverbinder

6 mm<sup>2</sup> - 19 mm

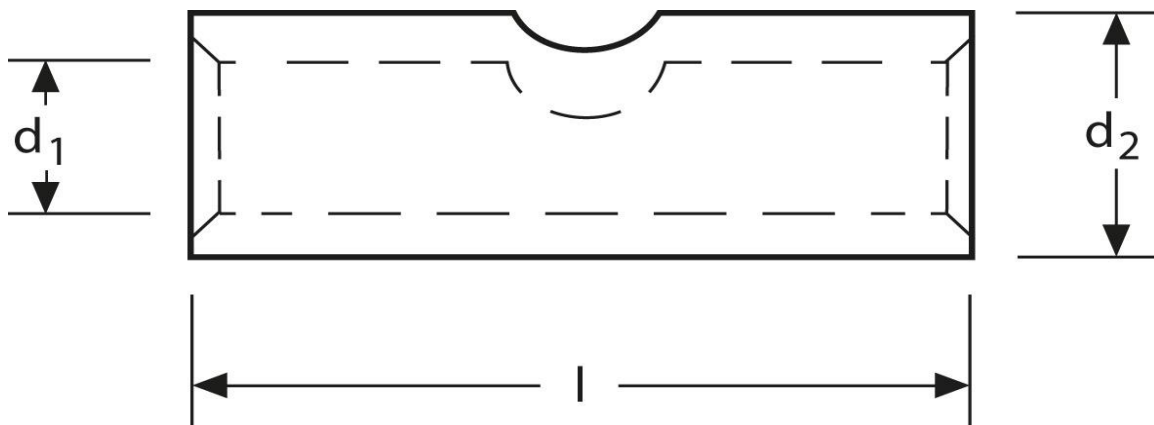


Art.Nr.	Werkstoff	Oberfläche		
K 332006.4	E-CU	galv. Sn	2,22 / 1000	100
	$d_1$	$l$	$d_2$	
in mm:	3,7	19	5,5	

Stand: 29.04.2019

## Butt - connectors

6 mm<sup>2</sup> - 19 mm



part no.	material	surface		
K 332006.4	E-CU	tin-plated	2,22 / 1000	100
	$d_1$	$l$	$d_2$	
in mm:	3,7	19	5,5	

date: 29.04.2019