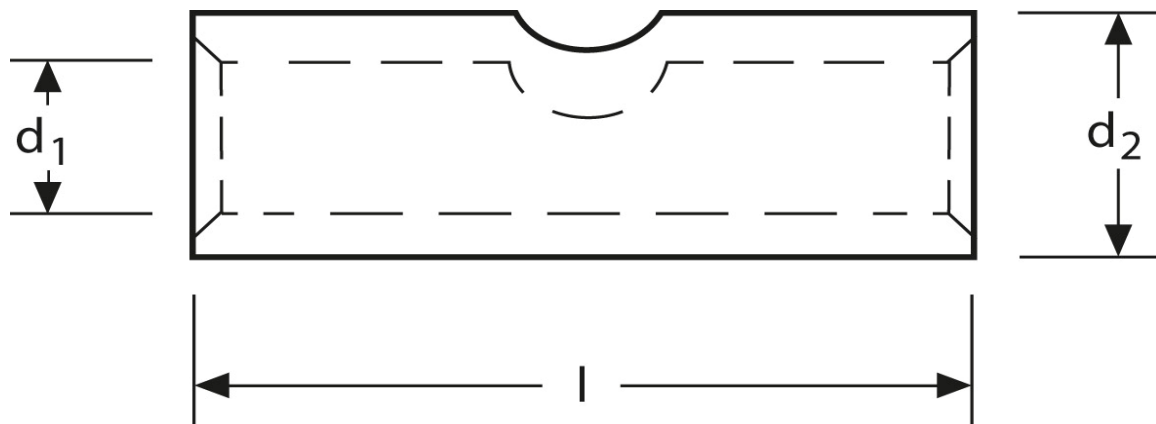
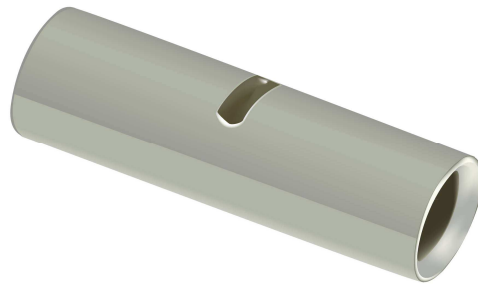


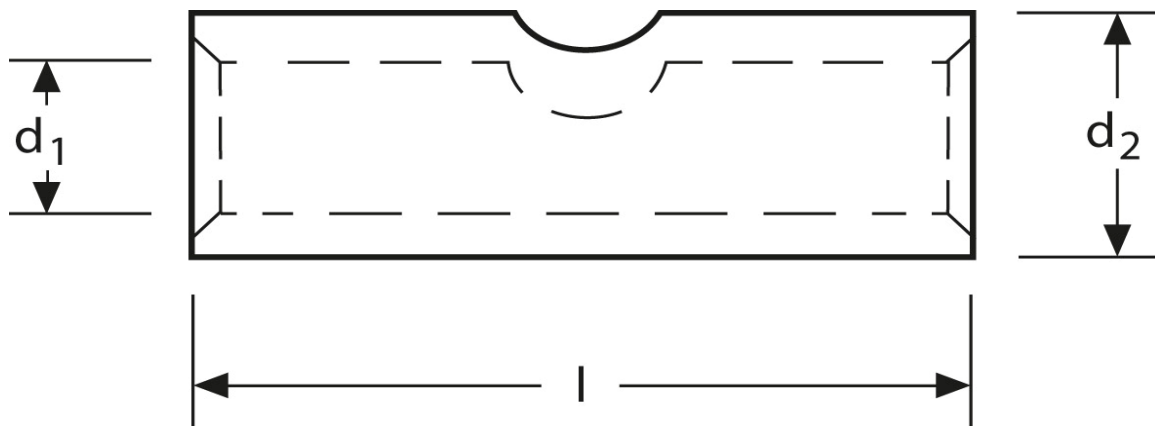
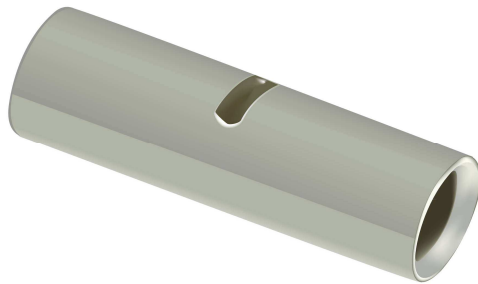
## Stoßverbinder 6 mm<sup>2</sup>



Art.Nr.	Werkstoff	Oberfläche		
K 332006	E-CU	galv. Sn	1,90 / 1000	1.000
	$d_1$	$l$	$d_2$	$s$
in mm:	3,6	15	5,6	1,0

Stand: 07.08.2014

## Butt - connectors 6 mm<sup>2</sup>



part no.	material	surface		
K 332006	E-CU	tin-plated	1,90 / 1000	1.000
	<b>d<sub>1</sub></b>	<b>l</b>	<b>d<sub>2</sub></b>	<b>s</b>
<b>in mm:</b>	<b>3,6</b>	<b>15</b>	<b>5,6</b>	<b>1,0</b>

date: 07.08.2014