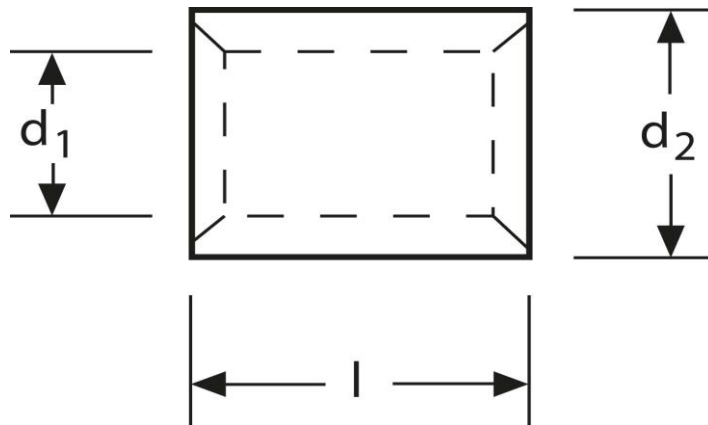


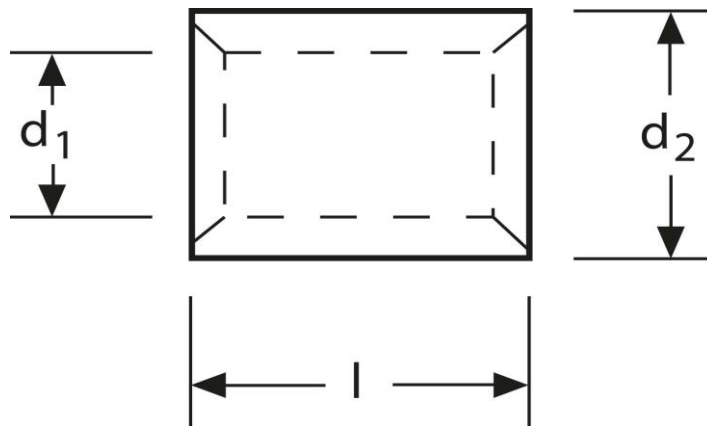
## Parallelverbinder 0,5 - 1 mm<sup>2</sup>



Art.Nr.	Werkstoff	Oberfläche		
K 333001	E-CU	galv. Sn	0,40 / 1000	1.000
	$d_1$	$l$	$d_2$	$s$
in mm:	1,6	8	3,2	0,8

Stand: 11.08.2014

## Parallel connectors 0,5 - 1 mm<sup>2</sup>



part no.	material	surface		
K 333001	E-CU	tin-plated	0,40 / 1000	1.000
	$d_1$	$l$	$d_2$	$s$
in mm:	1,6	8	3,2	0,8

date: 11.08.2014