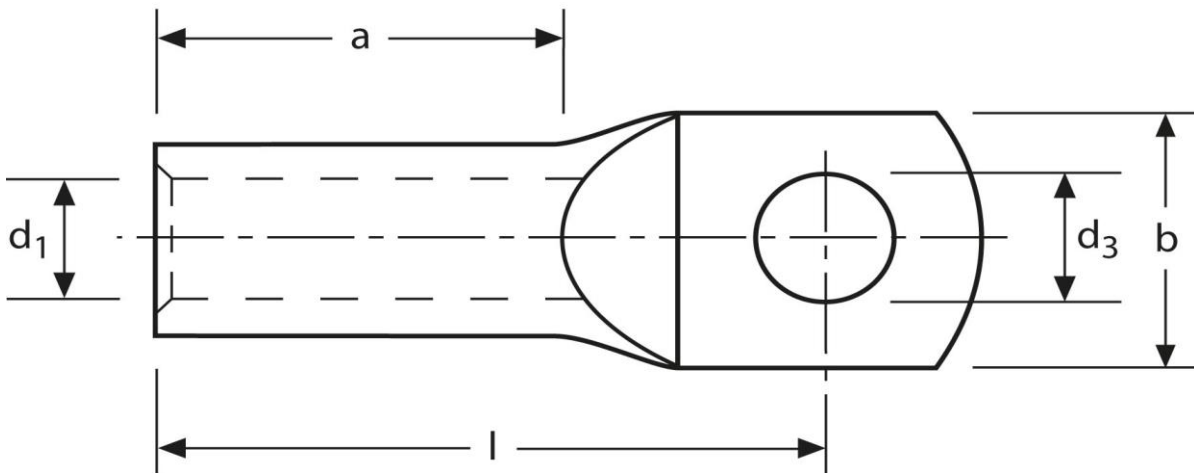


Rohrkabelschuhe

Edelstahl V2A

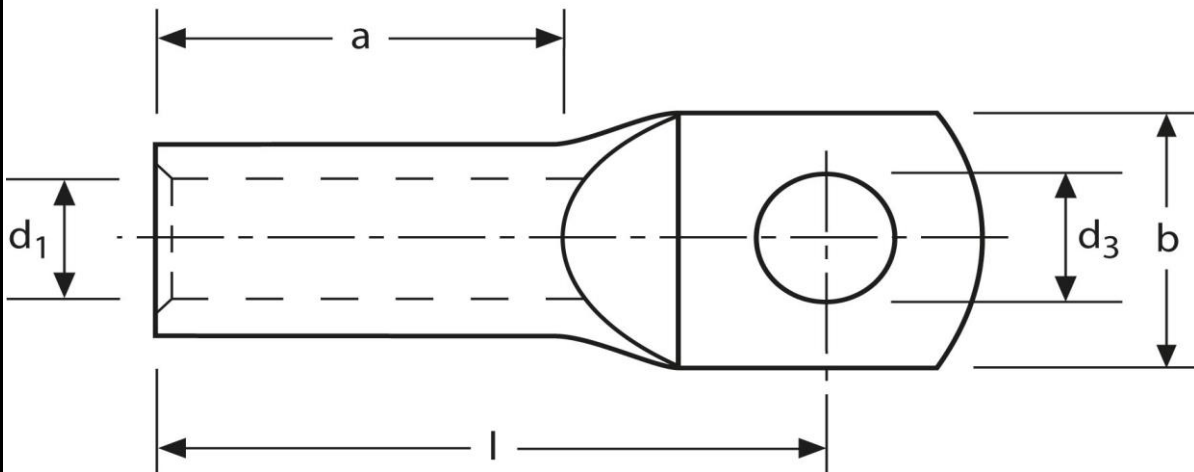
6 mm² M6



Art.Nr.	Werkstoff	Typ		
K335060St	Edelstahl	V2A	2,8 / 1000	100
	d ₃	d ₁	b	l
in mm:	6,5	4,0	10,0	19
	a	Temperaturbeständigkeit		
	9 mm	bis 400°C		

Stand: 23.07.2018

Tubular cable-lugs
stainless steel V2A
6 mm² M6



part no.	material	type		
K335060St	stainl. steel	V2A	2,8 / 1000	100
	d₃	d₁	b	l
in mm:	6,5	4,0	10,0	19
	a	temperature resistance		
	9 mm	up to 400°C		

date: 23.07.2018