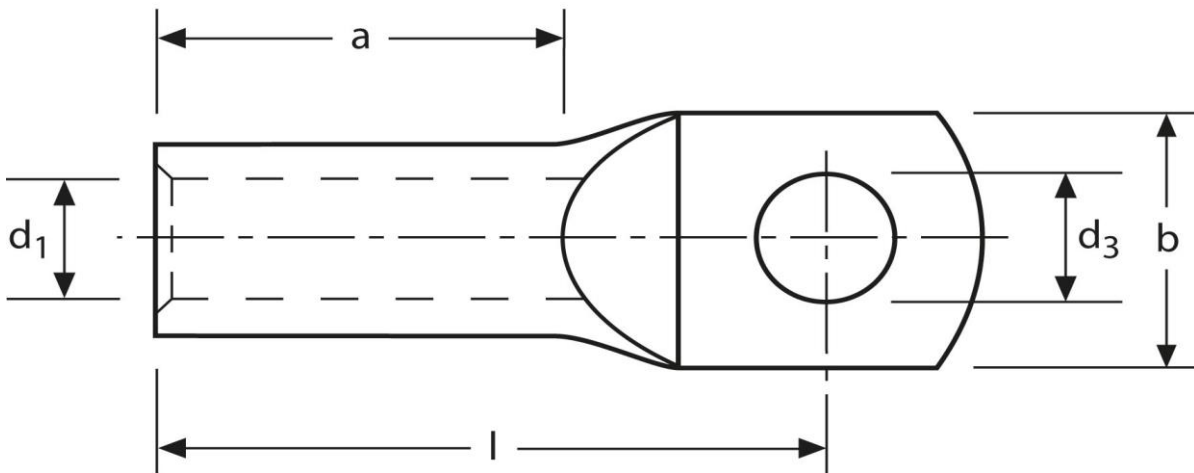


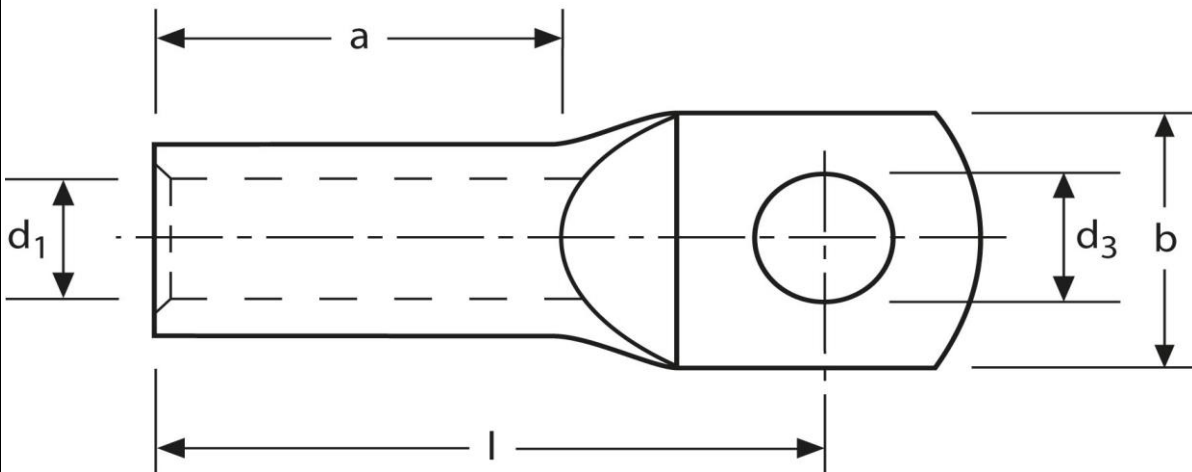
Rohrkabelschuhe
 handelsüblich - vernickelt
 6 mm² M6



Art.Nr.	Werkstoff	Oberfläche		
K335060vn	E-CU	vernickelt	4,7 / 1000	100
	d₃	d₁	b	
in mm:	6,5	3,5	12,0	
	l	a		
in mm:	21	9		

Stand: 24.03.2016

Tubular cable-lugs
commercial - nickel plated
6 mm² M6



part no.	material	surface		
K335060vn	E-CU	nickel-plated	4,7 / 1000	100

	d ₃	d ₁	b
in mm:	6,5	3,5	12,0

	l	a
in mm:	21	9

date: 24.03.2016