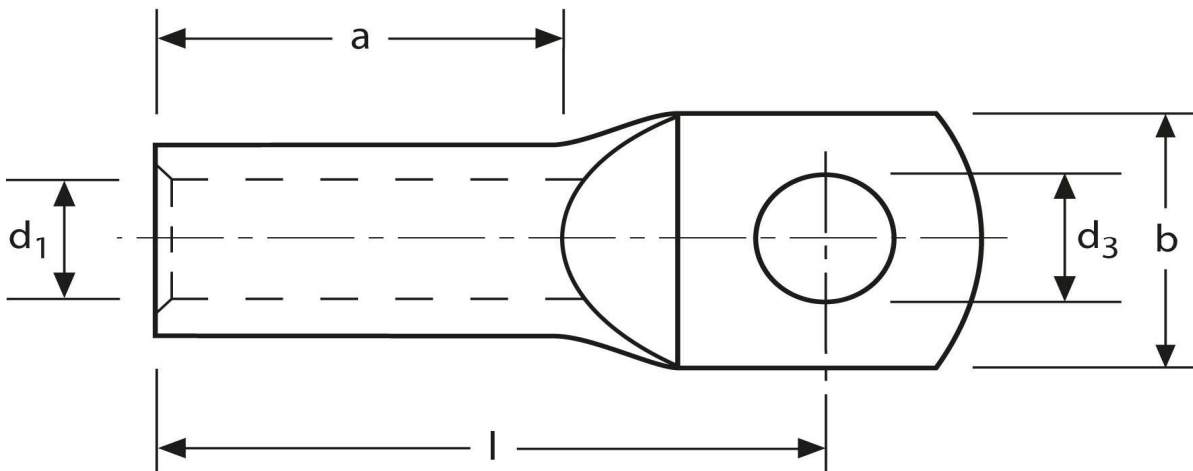


Rohrkabelschuhe

handelsüblich

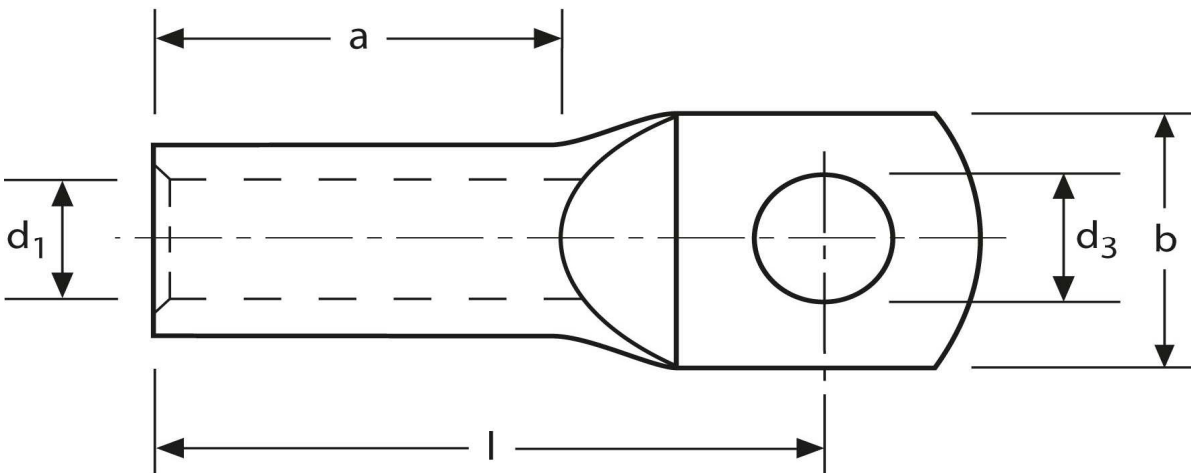
6 mm² M8



Art.Nr.	Werkstoff	Oberfläche		
K335080	E-CU	galv. Sn	5,4 / 1000	100
	d ₃	d ₁	b	
in mm:	8,5	3,5	13,0	
	l	a		
in mm:	23	9		

Stand: 09.10.2014

Tubular cable-lugs
 commercial
 6 mm² M8



part no.	material	surface		
K335080	E-CU	tin-plated	5,4 / 1000	100
	d₃	d₁	b	
in mm:	8,5	3,5	13,0	
	l	a		
in mm:	23	9		

date: 09.10.2014