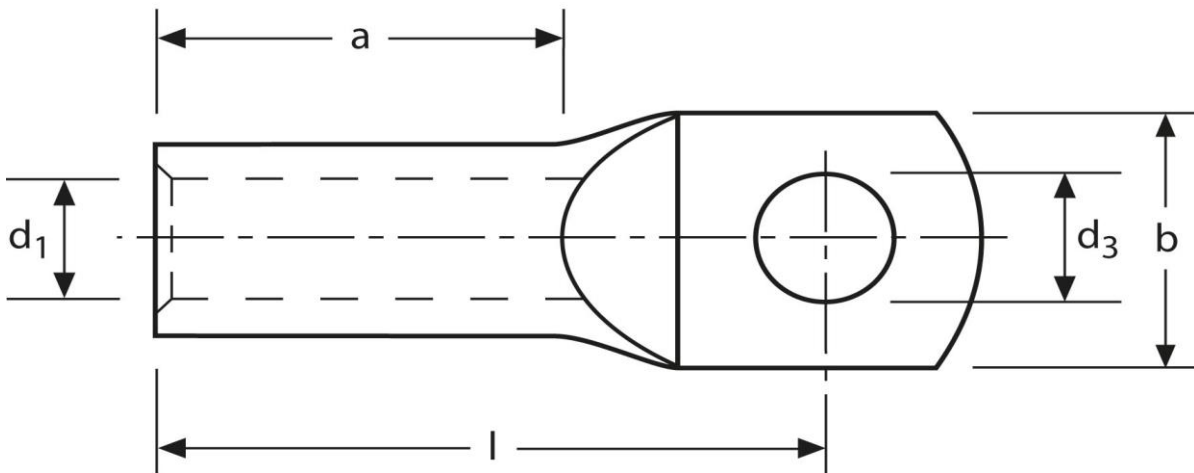


Rohrkabelschuhe

Edelstahl V2A

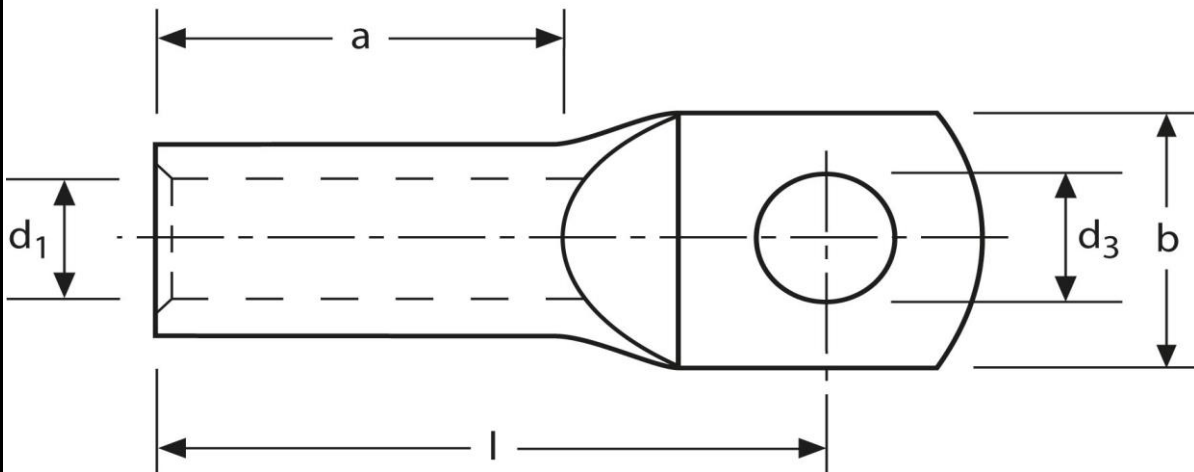
16 mm² M6



Art.Nr.	Werkstoff	Typ		
K337060St	Edelstahl	V2A	5,5 / 1000	50
	d₃	d₁	b	l
in mm:	6,5	6,0	12,0	28
	a	Temperaturbeständigkeit		
	13 mm	bis 400°C		

Stand: 27.11.2018

Tubular cable-lugs
 stainless steel V2A
 16 mm² M6



part no.	material	type		
K337060St	stainl. steel	V2A	5,5 / 1000	50
	d₃	d₁	b	l
in mm:	6,5	6,0	12,0	28
	a	temperature resistance		
	13 mm	up to 400°C		

date: 27.11.2018