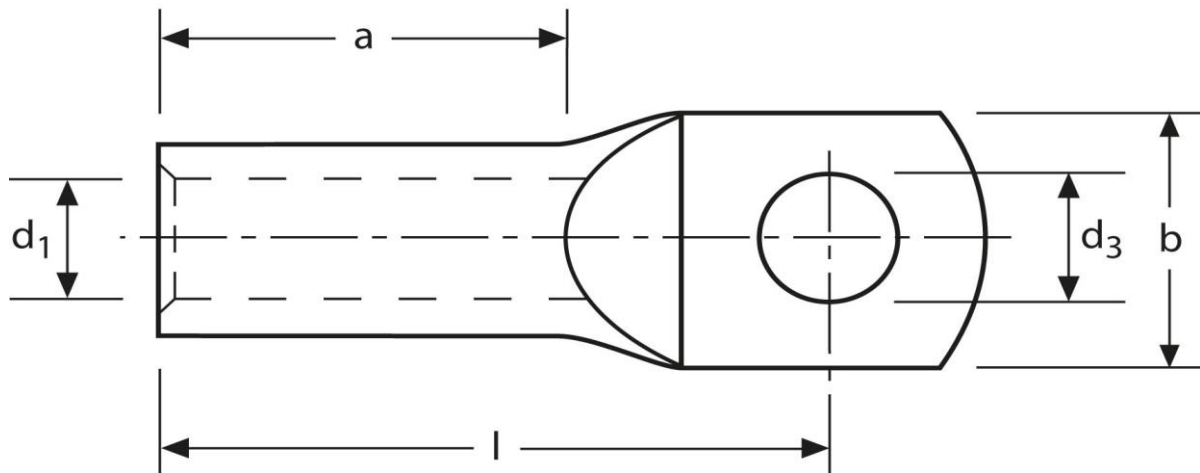


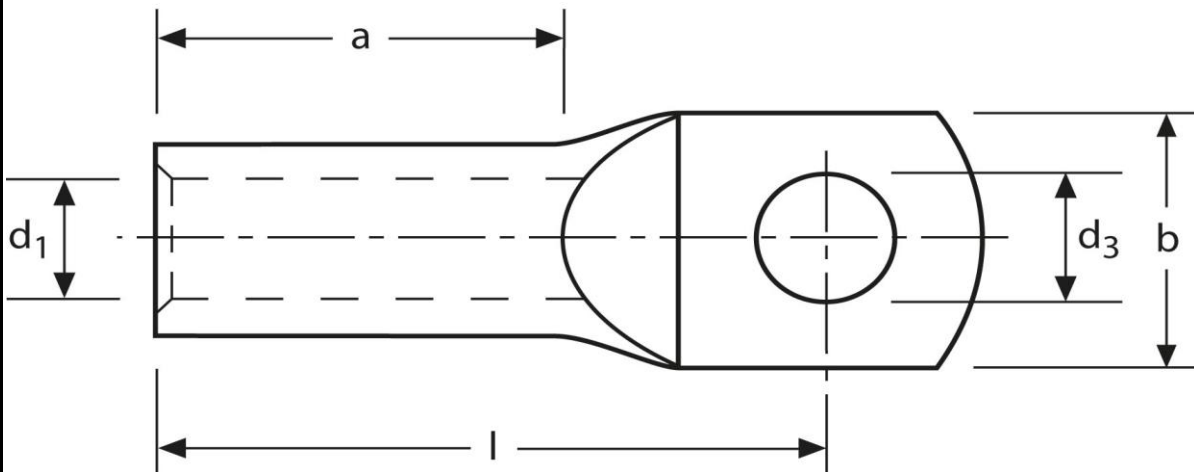
Rohrkabelschuhe
 handelsüblich, mit Sichtloch
 16 mm² M8



Art.Nr.	Werkstoff	Oberfläche		
K337080 II	E-CU	galv. Sn	9,7/ 1000	100
	d ₃	d ₁	b	
in mm:	8,5	5,5	15,0	
	l	a		
in mm:	27,7	13		

Stand: 06.03.2017

Tubular cable-lugs
commercial, with inspection hole
16 mm² M8



part no.	material	surface		
K337080 II	E-CU	tin-plated	9,7/ 1000	100
	d₃	d₁	b	
in mm:	8,5	5,5	15,0	
	l	a		
in mm:	27,7	13		

date: 06.03.2017