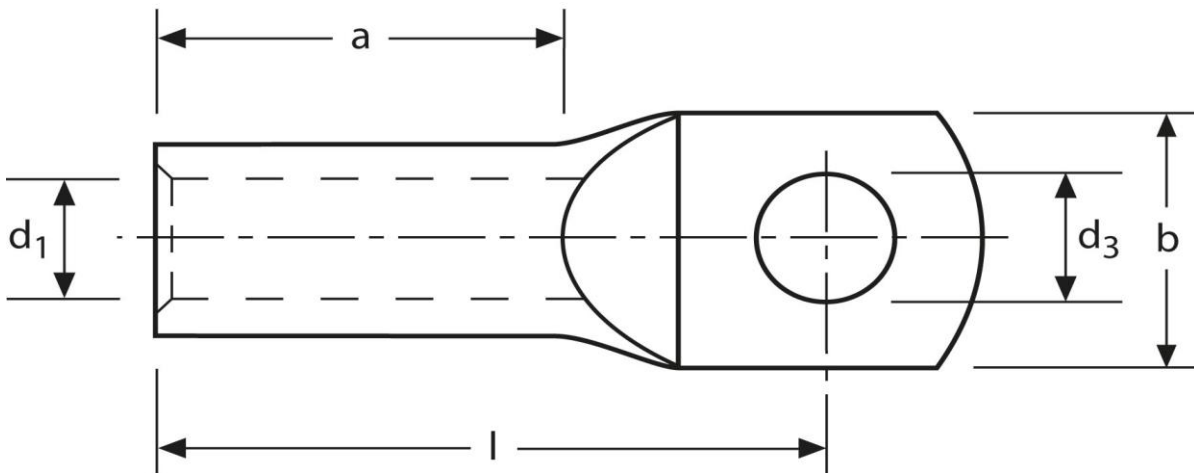


Rohrkabelschuhe

handelsüblich

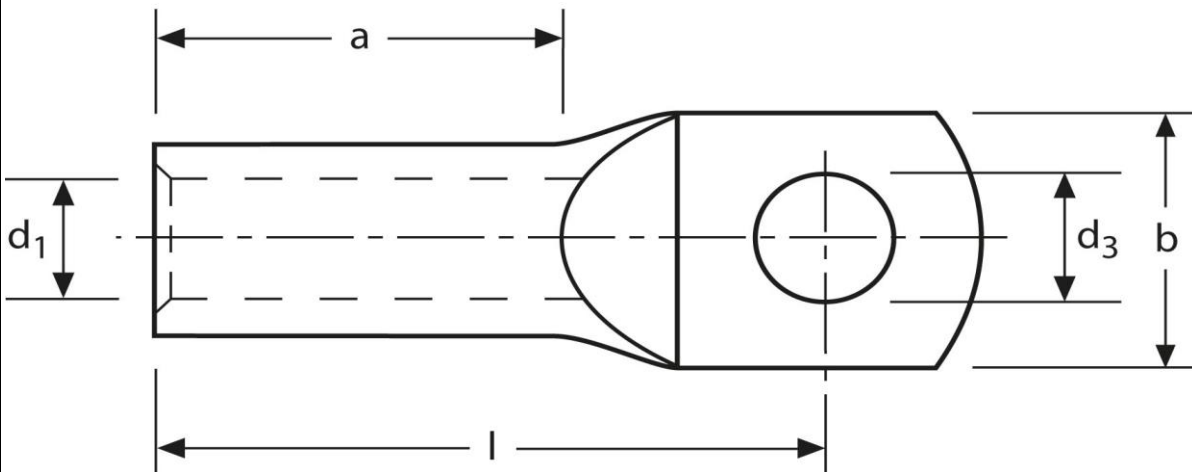
35 mm² M8



Art.Nr.	Werkstoff	Oberfläche		
K339080	E-CU	galv. Sn	20,0/ 1000	50
	d₃	d₁	b	
in mm:	8,5	8,5	18,0	
	l	a		
in mm:	33,5	17		

Stand: 13.11.2014

Tubular cable-lugs
commercial
35 mm² M8



part no.	material	surface		
K339080	E-CU	tin-plated	20,0/ 1000	50
	d₃	d₁	b	
in mm:	8,5	8,5	18,0	
	l	a		
in mm:	33,5	17		

date: 13.11.2014