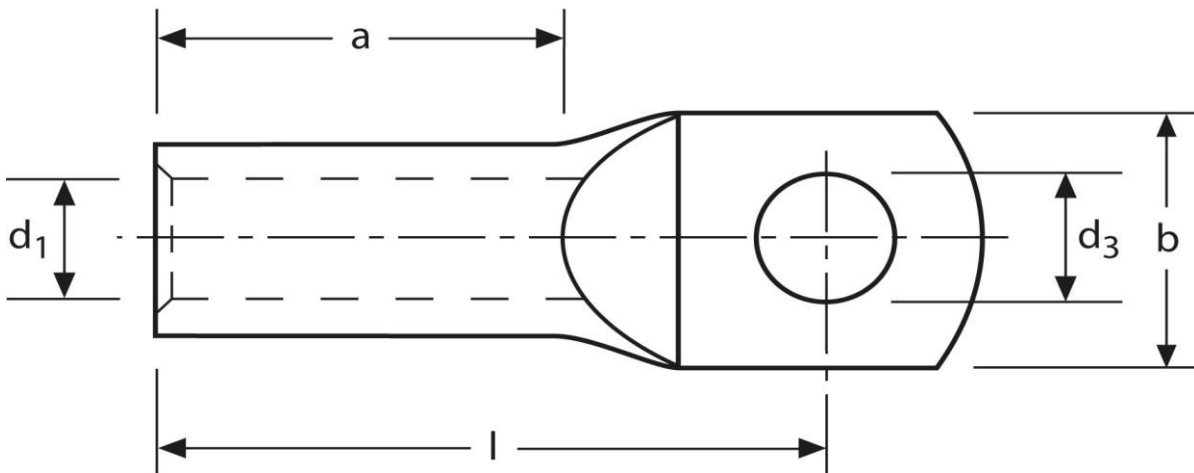
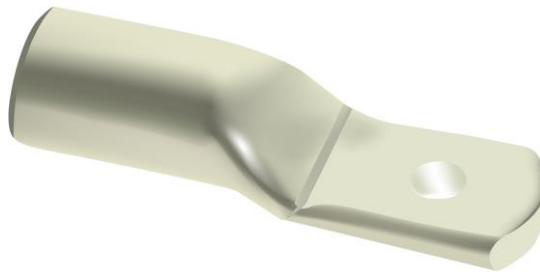


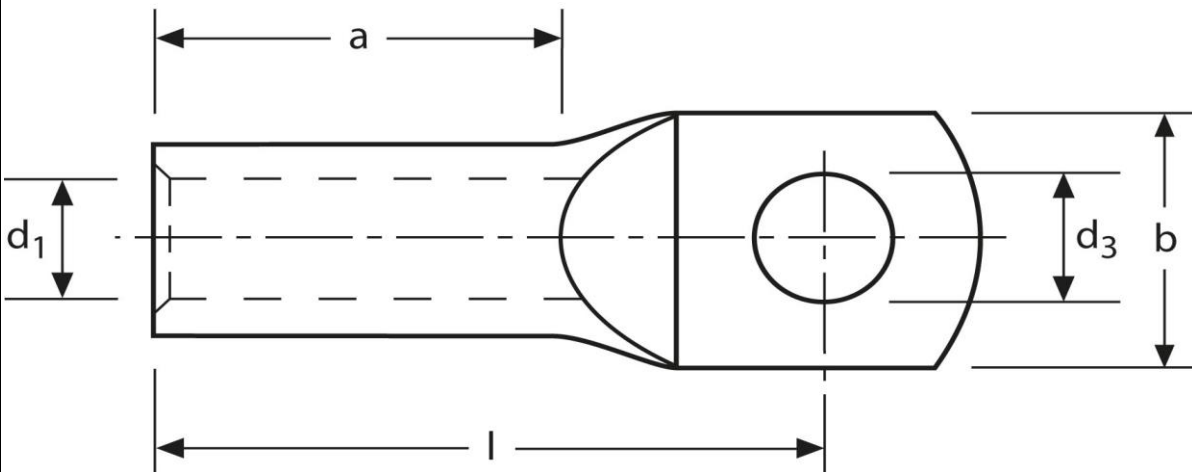
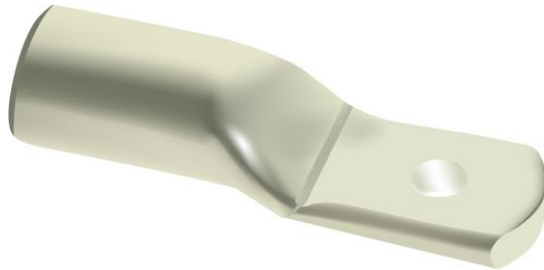
Rohrkabelschuhe
für Schaltgeräteanschlüsse
120 mm² M8



Art.Nr.	Werkstoff	Oberfläche		
K343080SG	E-CU	galv. Sn	5,94 / 1000	10
	d ₃	d ₁	b	
in mm:	8,4	15,0	19	
	l	a		
in mm:	51,0	26		

Stand: 30.01.2023

Tubular cable-lugs
 for switch gear connections
 120 mm² M8



part no.	material	surface		
K343080SG	E-CU	tin-plated	5,94 / 1000	10
	d₃	d₁	b	
in mm:	8,4	15,0	19	
	l	a		
in mm:	51,0	26		

date: 30.01.2023