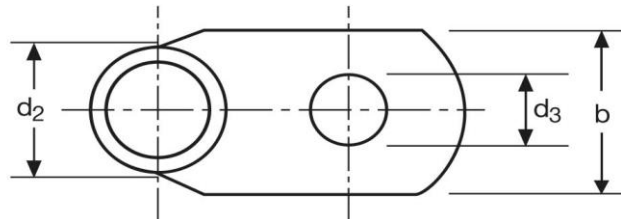
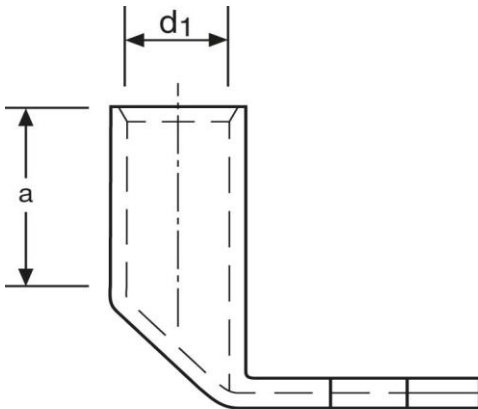


## Winkelkabelschuhe

90° abgewinkelt

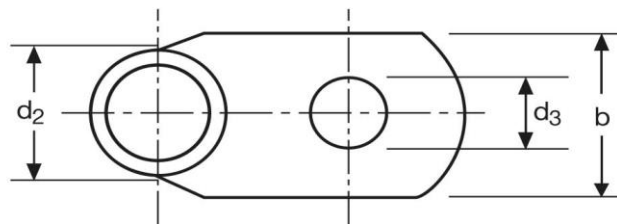
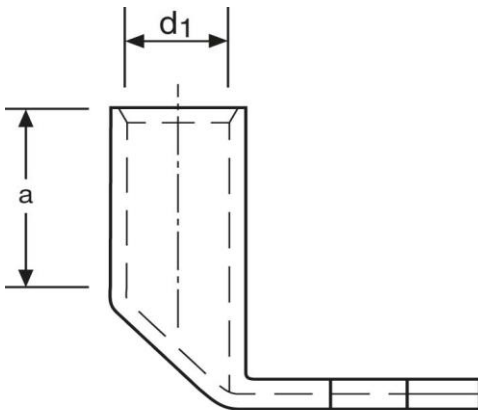
70 mm<sup>2</sup> M8



Art.Nr.	Werkstoff	Oberfläche		
K366080	E-CU	galv. Sn	48,0/ 1000	25
	d <sub>3</sub>	b	a	
in mm:	8,5	23	21	
	d <sub>1</sub>	d <sub>2</sub>		
in mm:	12,0	16,5		

Stand: 06.03.2017

**Angled cable-lugs**  
90° angle  
70 mm<sup>2</sup> M8



part no.	material	surface		
K366080	E-CU	tin-plated	48,0/ 1000	25
	<b>d<sub>3</sub></b>	<b>b</b>	<b>a</b>	
<b>in mm:</b>	8,5	23	21	
	<b>d<sub>1</sub></b>	<b>d<sub>2</sub></b>		
<b>in mm:</b>	12,0	16,5		

date: 06.03.2017