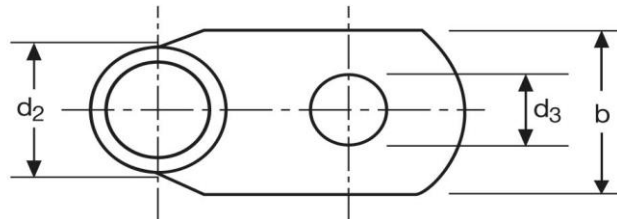
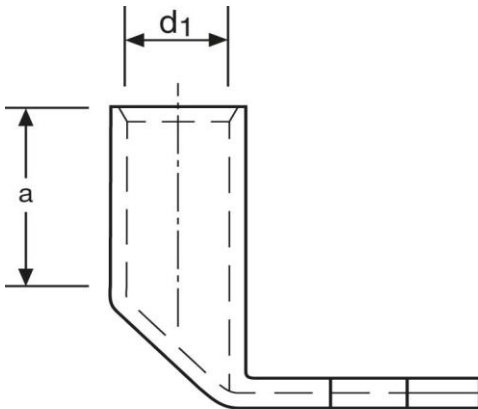


Winkelkabelschuhe

90° abgewinkelt

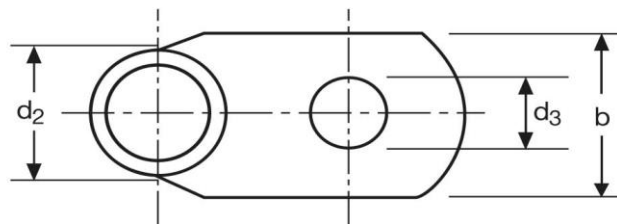
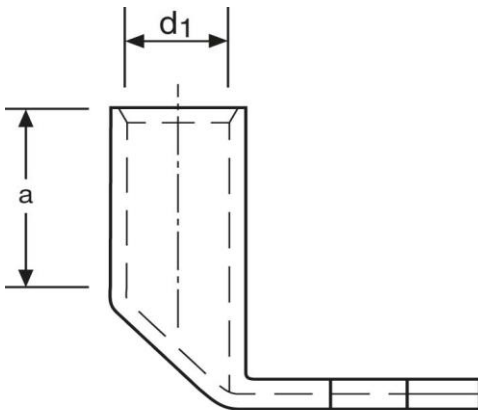
95 mm² M10



Art.Nr.	Werkstoff	Oberfläche		
K367100	E-CU	galv. Sn	58,8/ 1000	25
	d ₃	b	a	
in mm:	10,5	26	25	
	d ₁	d ₂		
in mm:	13,5	18,0		

Stand: 20.06.2018

Angled cable-lugs
 90° angle
 95 mm² M10



part no.	material	surface		
K367100	E-CU	tin-plated	58,8/ 1000	25
	d₃	b	a	
in mm:	10,5	26	25	
	d₁	d₂		
in mm:	13,5	18,0		

date: 20.06.2018