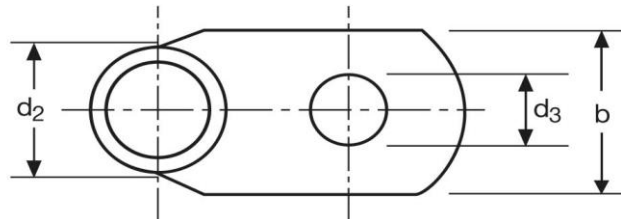
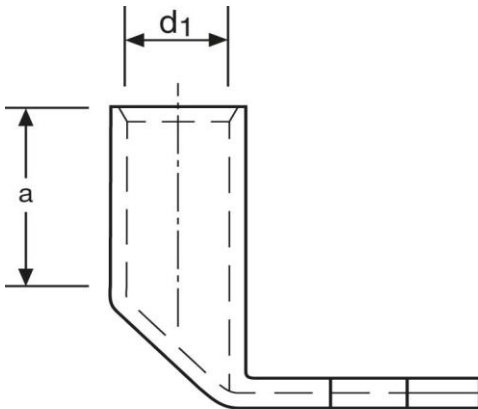


Winkelkabelschuhe

90° abgewinkelt

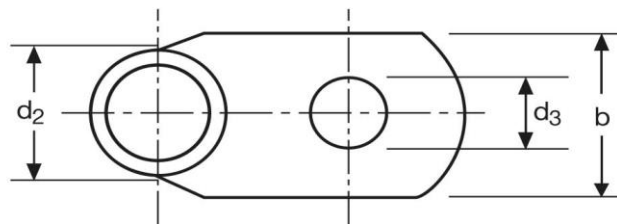
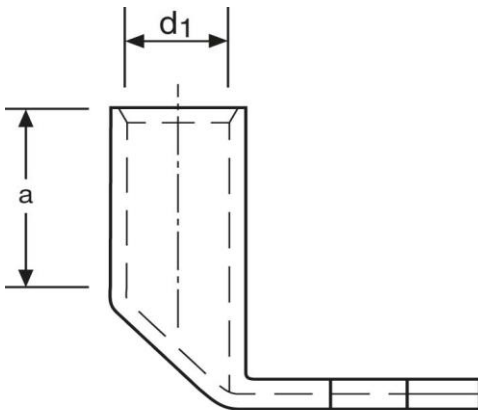
120 mm² M10



Art.Nr.	Werkstoff	Oberfläche		
K368100	E-CU	galv. Sn	73,0/ 1000	10
	d₃	b	a	
in mm:	10,5	28	26	
	d₁	d₂		
in mm:	15,0	19,5		

Stand: 20.06.2018

Angled cable-lugs
 90° angle
 120 mm² M10



part no.	material	surface		
K368100	E-CU	tin-plated	73,0/ 1000	10
	d₃	b	a	
in mm:	10,5	28	26	
	d₁	d₂		
in mm:	15,0	19,5		

date: 20.06.2018