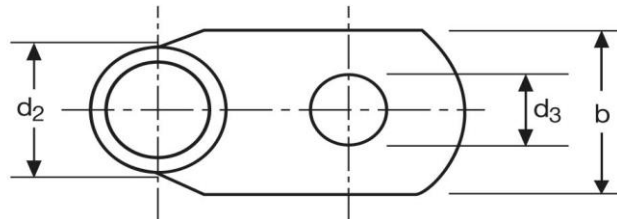
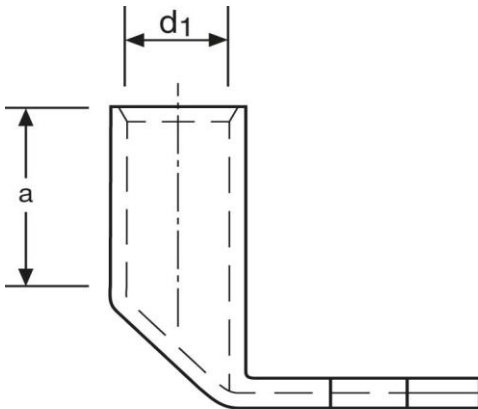


## Winkelrohrkabelschuhe

90° abgewinkelt

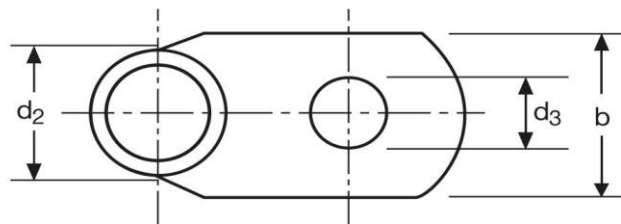
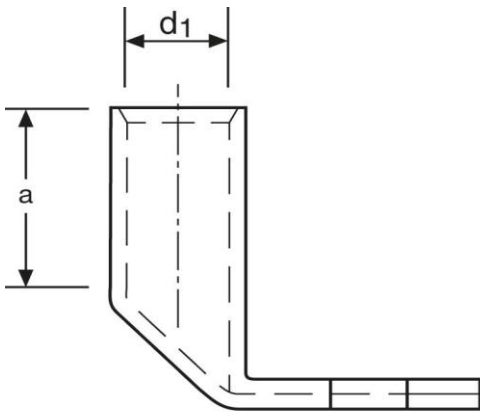
120 mm<sup>2</sup> M12



Art.Nr.	Werkstoff	Oberfläche		
K368120	E-CU	galv. Sn	71,9/ 1000	10
	<b>d<sub>3</sub></b>	<b>b</b>	<b>a</b>	
<b>in mm:</b>	13,0	28	26	
	<b>d<sub>1</sub></b>	<b>d<sub>2</sub></b>		
<b>in mm:</b>	15,0	19,5		

Stand: 20.06.2018

**Angled cable-lugs**  
 90° angle  
 120 mm<sup>2</sup> M12



part no.	material	surface		
K368120	E-CU	tin-plated	71,9/ 1000	10
	<b>d<sub>3</sub></b>	<b>b</b>	<b>a</b>	
<b>in mm:</b>	13,0	28	26	
	<b>d<sub>1</sub></b>	<b>d<sub>2</sub></b>		
<b>in mm:</b>	15,0	19,5		

date: 20.06.2018