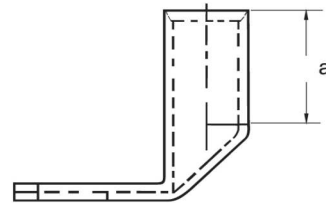
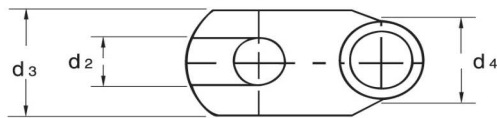
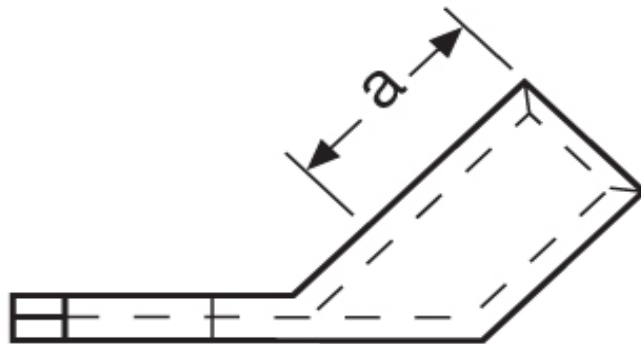


**Winkelkabelschuhe**  
120,00 mm<sup>2</sup>



Katalogseite: 2.18 - 2. 19

Art.Nr.	Werkstoff	Oberfläche			
K368121	E-CU	galv. Sn	73,00/1000	50	
	d2	d3	d4	a	Winkel
in mm:	13,0	29,0	19,5	28,0	45°