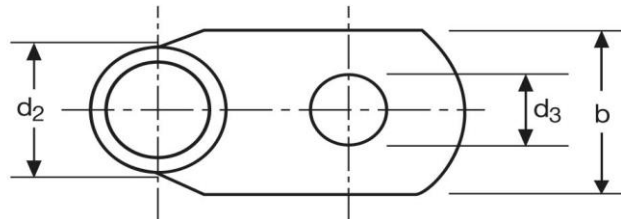
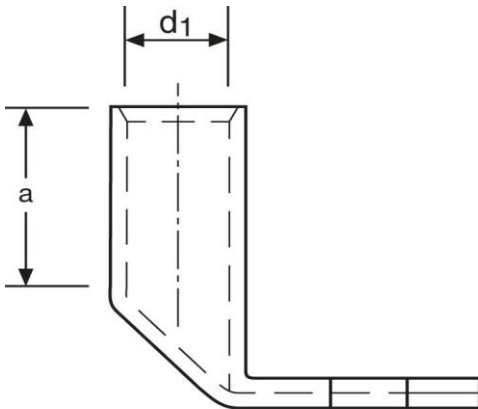


Winkelkabelschuhe

90° abgewinkelt

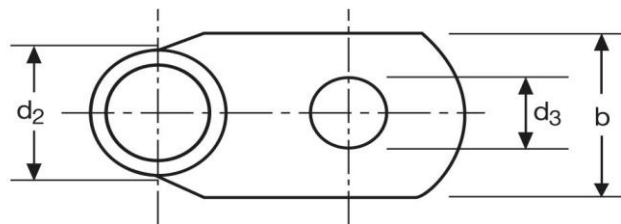
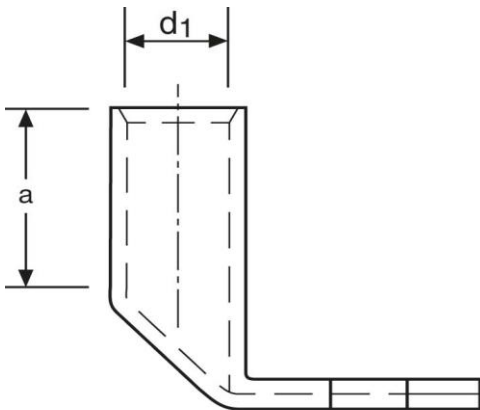
150 mm² M12



Art.Nr.	Werkstoff	Oberfläche		
K369120	E-CU	galv. Sn	83,4/ 1000	10
	d₃	b	a	
in mm:	13,0	31	30	
	d₁	d₂		
in mm:	16,5	21,0		

Stand: 20.06.2018

Angled cable-lugs
90° angle
150 mm² M12



part no.	material	surface		
K369120	E-CU	tin-plated	83,4/ 1000	10
	d₃	b	a	
in mm:	13,0	31	30	
	d₁	d₂		
in mm:	16,5	21,0		

date: 20.06.2018