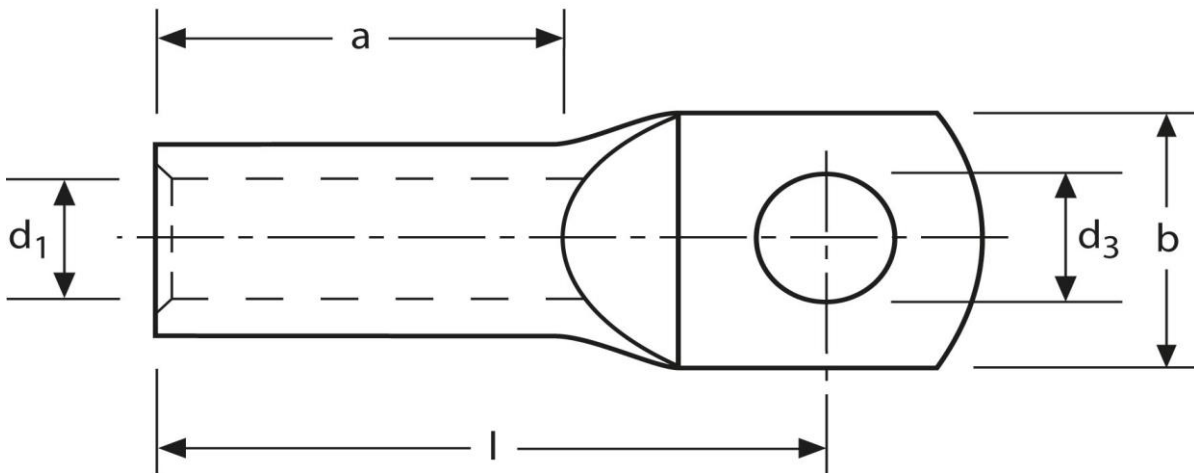


Kleinkabelschuh

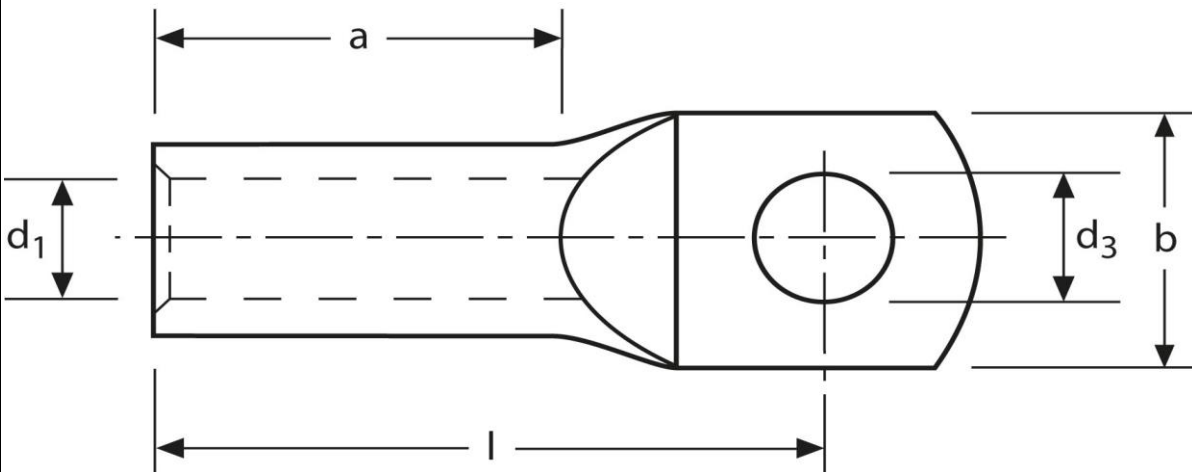
Ringform
 1,5 mm² M5



Art.Nr.	Werkstoff	Oberfläche		
K376050	E-CU	galv. Sn	1,44 / 1000	100
	d ₃	d ₁	b	
in mm:	5,3	1,8	7,5	
	l	a		
in mm:	13	6		

Stand: 17.10.2016

Mini cable-lugs
 ring-type
 1,5 mm² M5



part no.	material	surface		
K376050	E-CU	tin-plated	1,44 / 1000	100
	d₃	d₁	b	
in mm:	5,3	1,8	7,5	
	l	a		
in mm:	13	6		

date: 17.10.2016