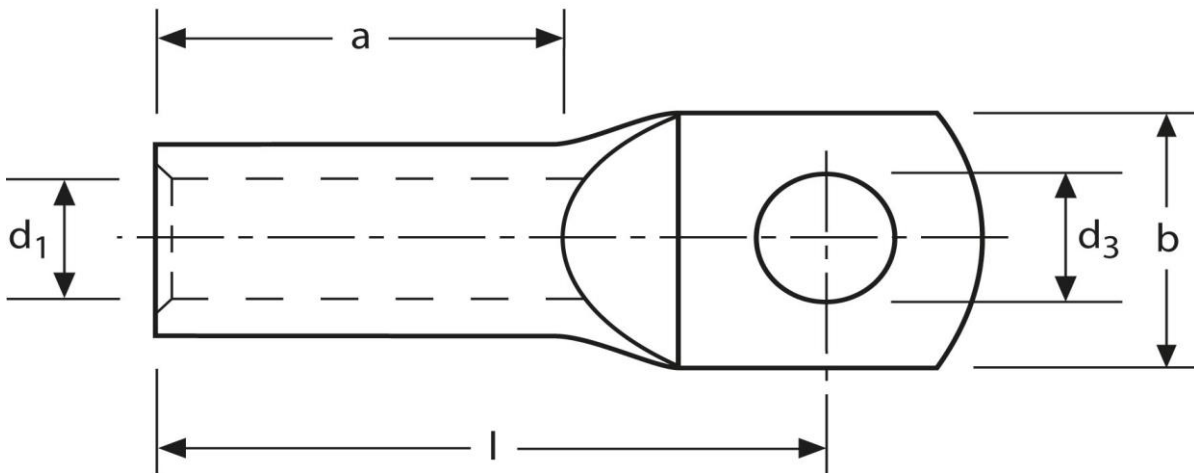


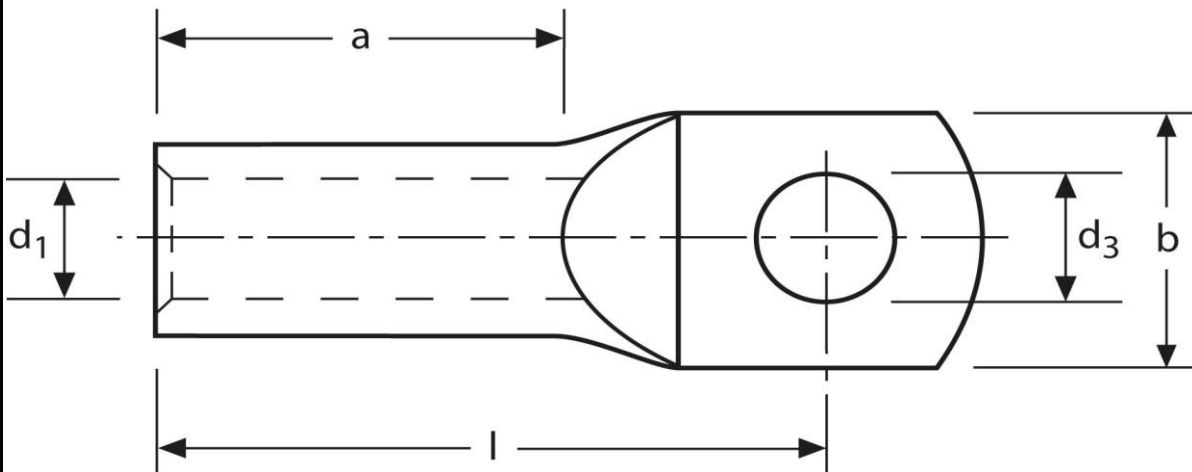
Kleinkabelschuh
 Ringform, mit Sichtloch
 4 mm² M4



Art.Nr.	Werkstoff	Oberfläche		
K378040	E-CU	galv. Sn	2,1 / 1000	100
	d ₃	d ₁	b	
in mm:	4,3	3,0	8,5	
	l	a		
in mm:	18	6		

Stand: 17.10.2016

Mini cable-lugs
ring-type, with inspection hole
4 mm² M4



part no.	material	surface		
K378040	E-CU	tin-plated	2,1 / 1000	100
	d₃	d₁	b	
in mm:	4,3	3,0	8,5	
	l	a		
in mm:	18	6		

date: 17.10.2016