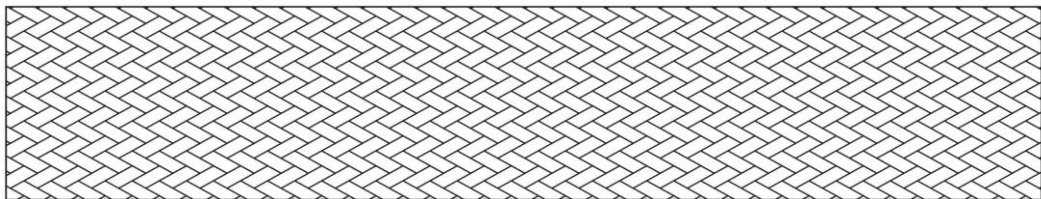
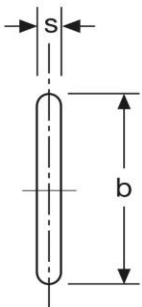
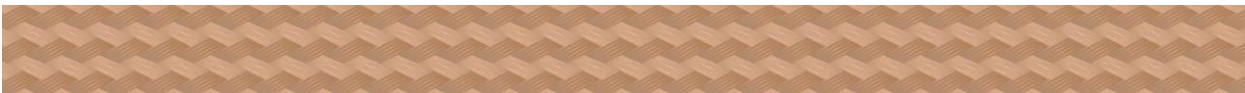


Kupferflachlitze
10 mm²
 aus geflochtenem Kupfer, blank



Artikel Nr.		Querschnitt	
KMF 10001		10 mm ²	
Material geflecht		Ø Einzeldraht	
Cu-ETP, blank		nom. 0,07mm	
Aufbau	s	b	max Amp
24 x 109 x 0,07 mm	1,5 mm	14 mm	85 A

Stand: 31.01.2019