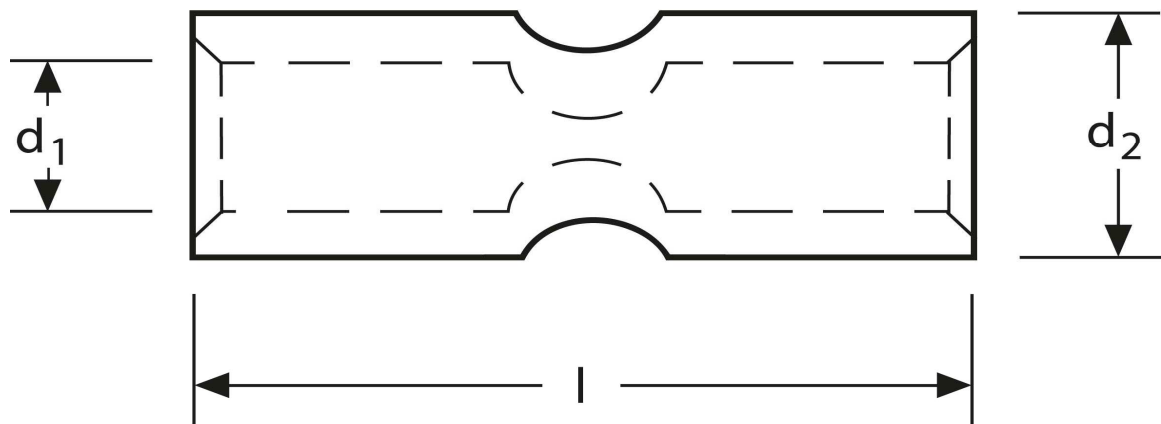


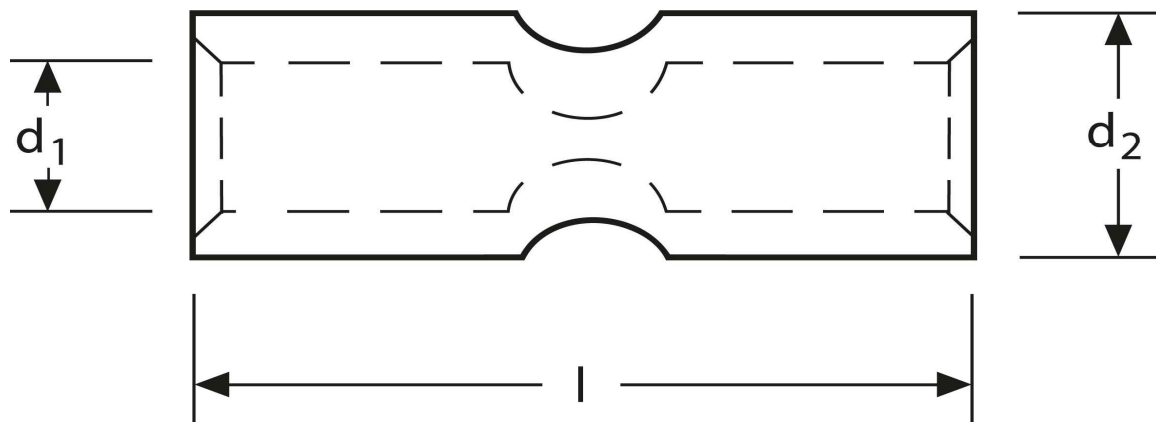
Kerbverbinder 1,5 mm²



Art.Nr.	Werkstoff	Oberfläche		
KV 332001	E-CU	galv. Sn	1,2 / 1000	100
	d_1	l	d_2	s
in mm:	1,8	20	3,3	0,75

Stand: 12.08.2014

Connectors
 1,5 mm²



part no.	material	surface		
KV 332001	E-CU	tin-plated	1,2 / 1000	100
	d_1	l	d_2	s
in mm:	1,8	20	3,3	0,75

date: 12.08.2014