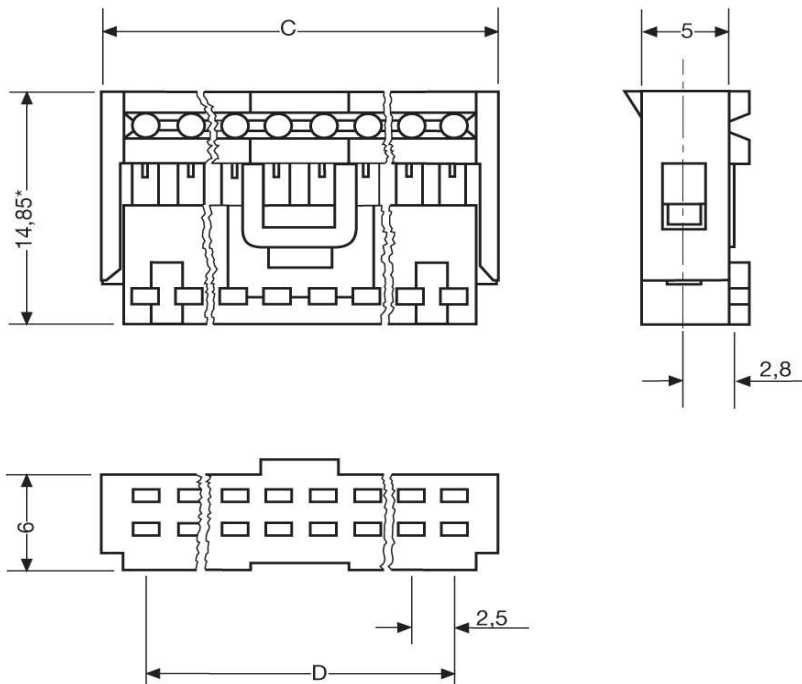
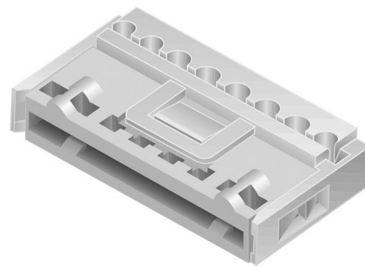




Federleisten in Schneidklemmtechnik

MKFL 13260



Katalogseite: 5.02

Art.Nr.	Massivleiter Ø	Litze. 7-drähtig	Isolation Ø
MKFL 13268-6-0-808	0,5 - 0,6	0,22 - 0,25	1,2 - 1,5
	C	D	Polzahl
in mm:	22,4	17,5	8